

# **GABRIEL WARTOFSKY PORTFOLIO**

# TABLE OF CONTENTS

## **SPATIAL DESIGN + VISUALIZATION**

- Wingtip
- Floating Home
- Texino Tiny Home
- Greenhouse
- Bloom + Plume Café
- Ben Medansky Mosaic: The Proper Hotel, Los Angeles
- Acura Autonomy 2040
- Texino Atrium

## **XR ACTIVATIONS**

- Enrique Agudo Studios
- EPOCH: A Cosmic Movie Camera
- BUSTED Photogrammetry Pop-Up

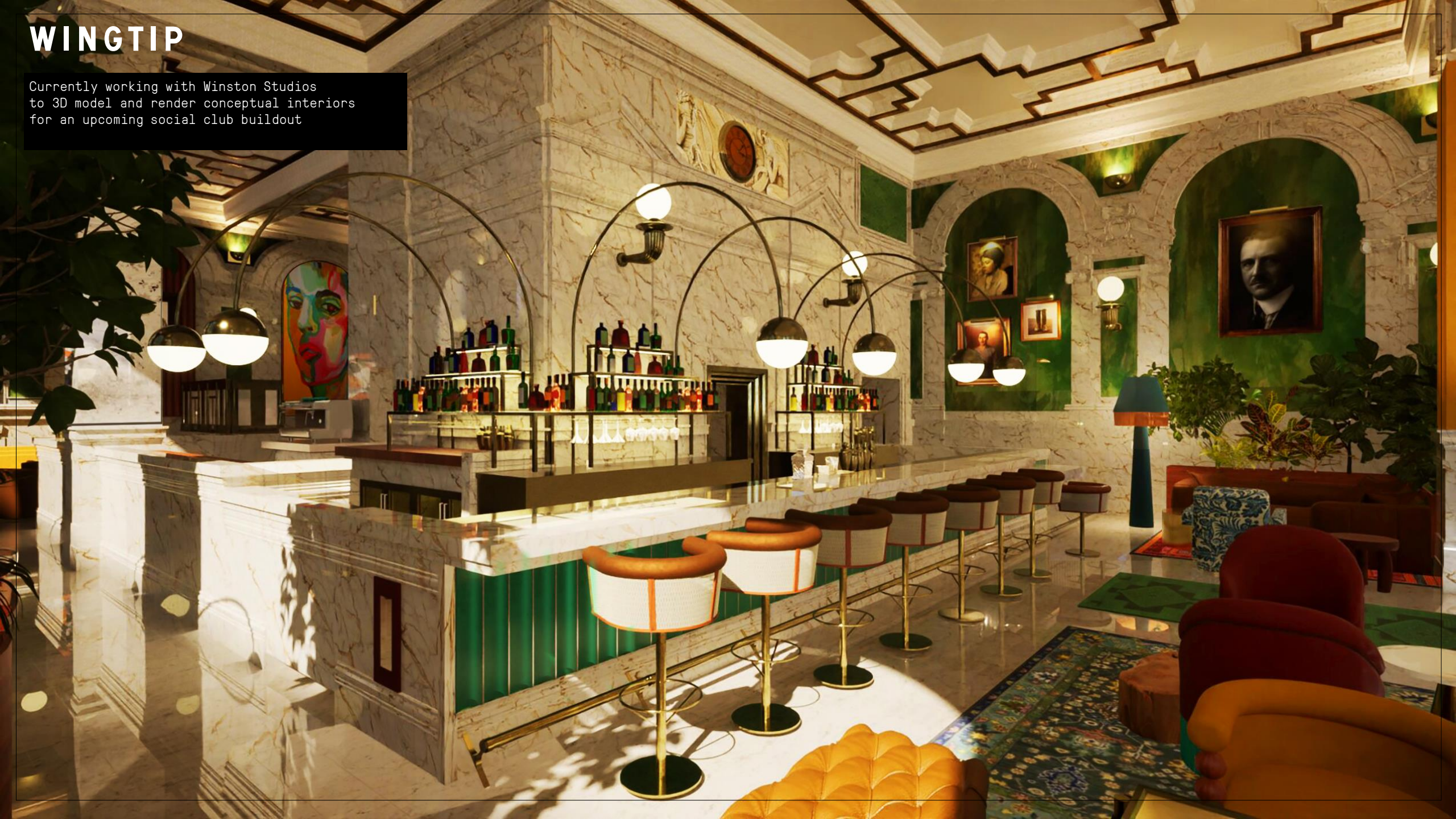
## **DRAWINGS + FABRICATION**

- Texino Tiny Home
- Doja Cat/ Doechii Tour Swamp Boat
- Texino Atrium
- CCC E-Bike

# **SPATIAL DESIGN + VISUALIZATION**

# WINGTIP

Currently working with Winston Studios to 3D model and render conceptual interiors for an upcoming social club buildout



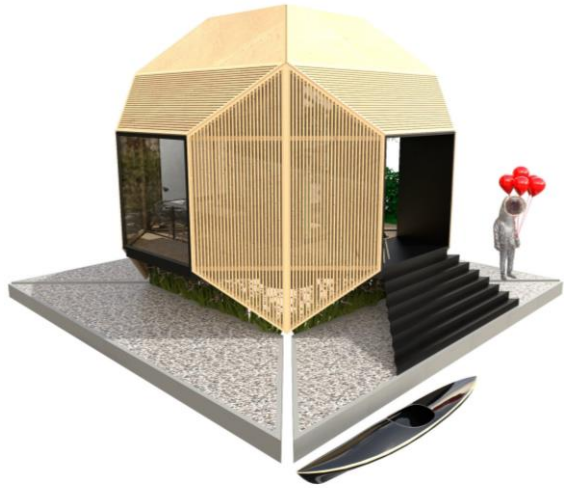
WINGTIP



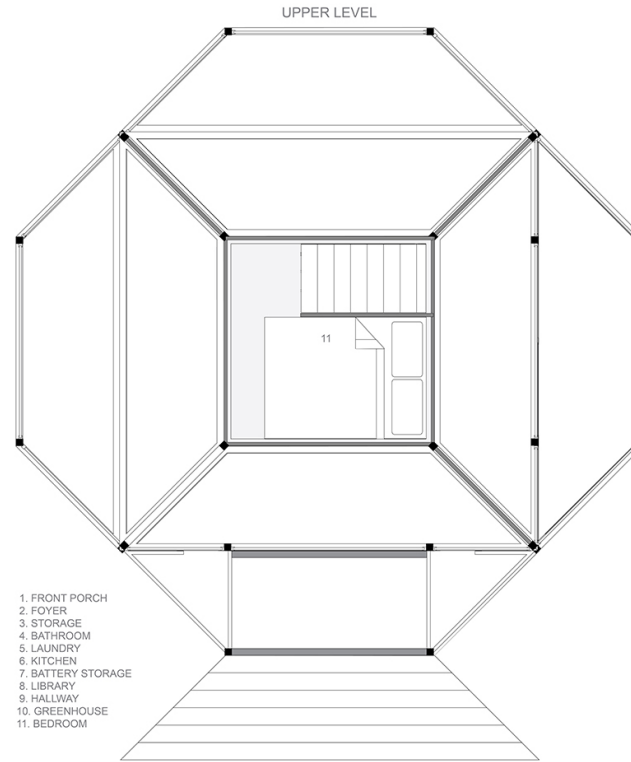
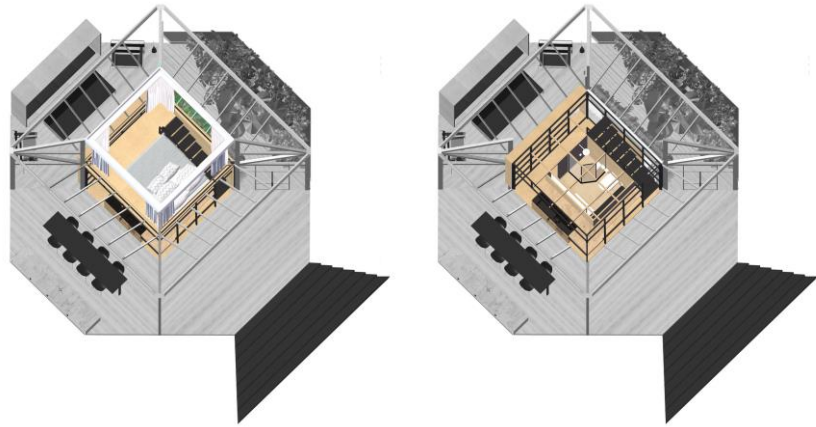
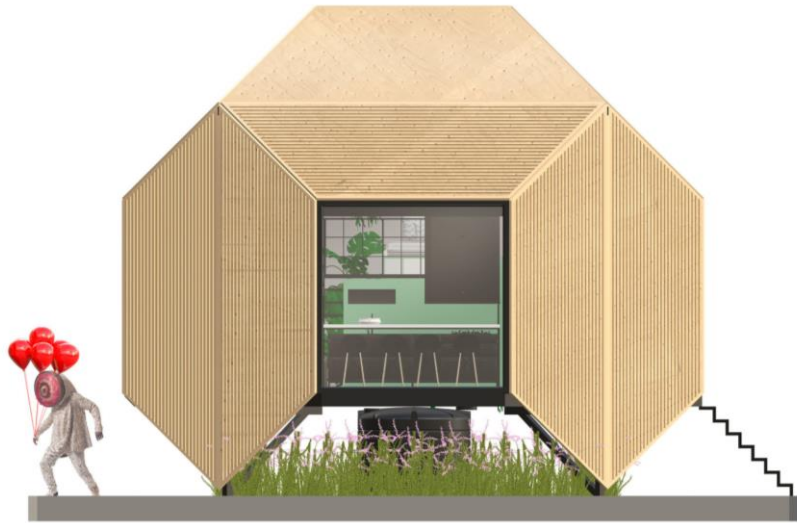
# FLOATING HOME

The Hypercube is a pre-fab, autonomous floating home designed to both address the housing needs of communities affected by rising sea levels, and to reconnect dwellers to the natural systems that sustain them.

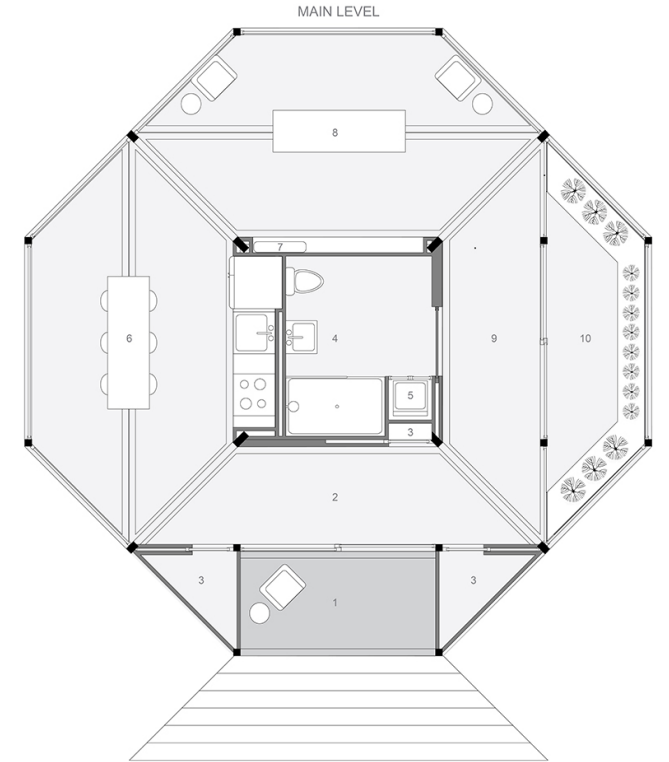
More on project [here](#)



# FLOATING HOME



1. FRONT PORCH
2. FOYER
3. STORAGE
4. BATHROOM
5. LAUNDRY
6. KITCHEN
7. BATTERY STORAGE
8. LIBRARY
9. HALLWAY
10. GREENHOUSE
11. BEDROOM

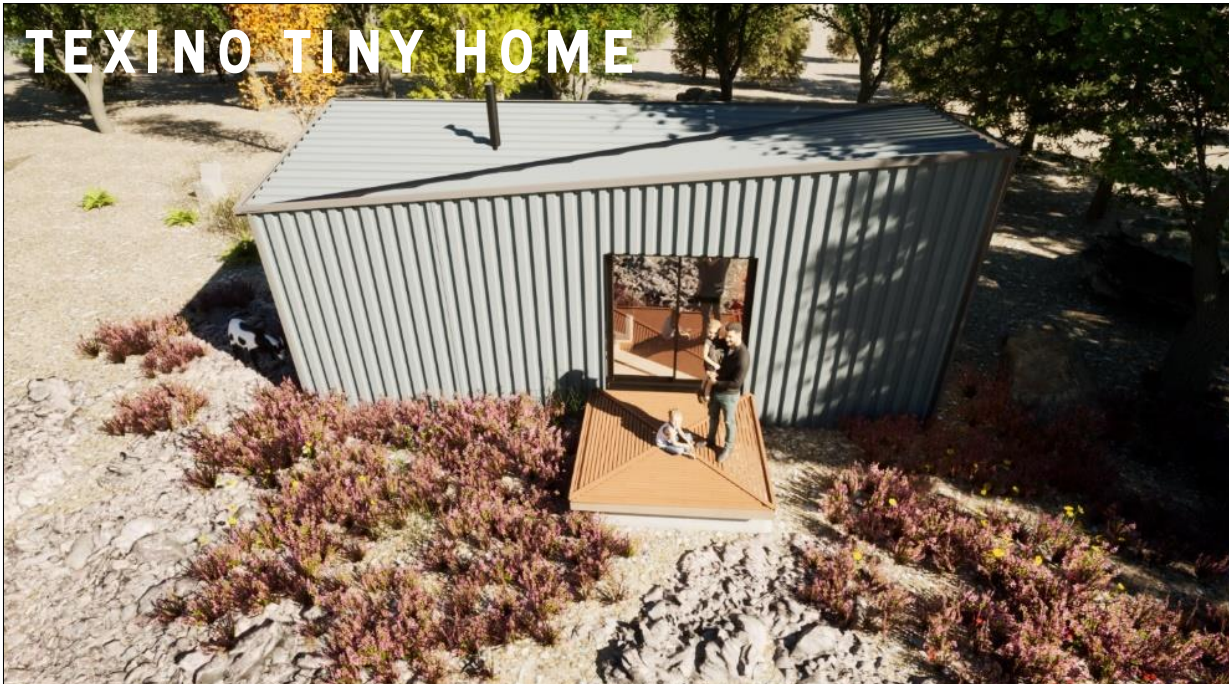


HYPERCUBE II FLOOR PLAN

0 1 5 10 ft

Partially constructed, partially grown, Hypercube is capable of producing and regulating its own energy, water and food supply.

# TEXINO TINY HOME





# GREENHOUSE

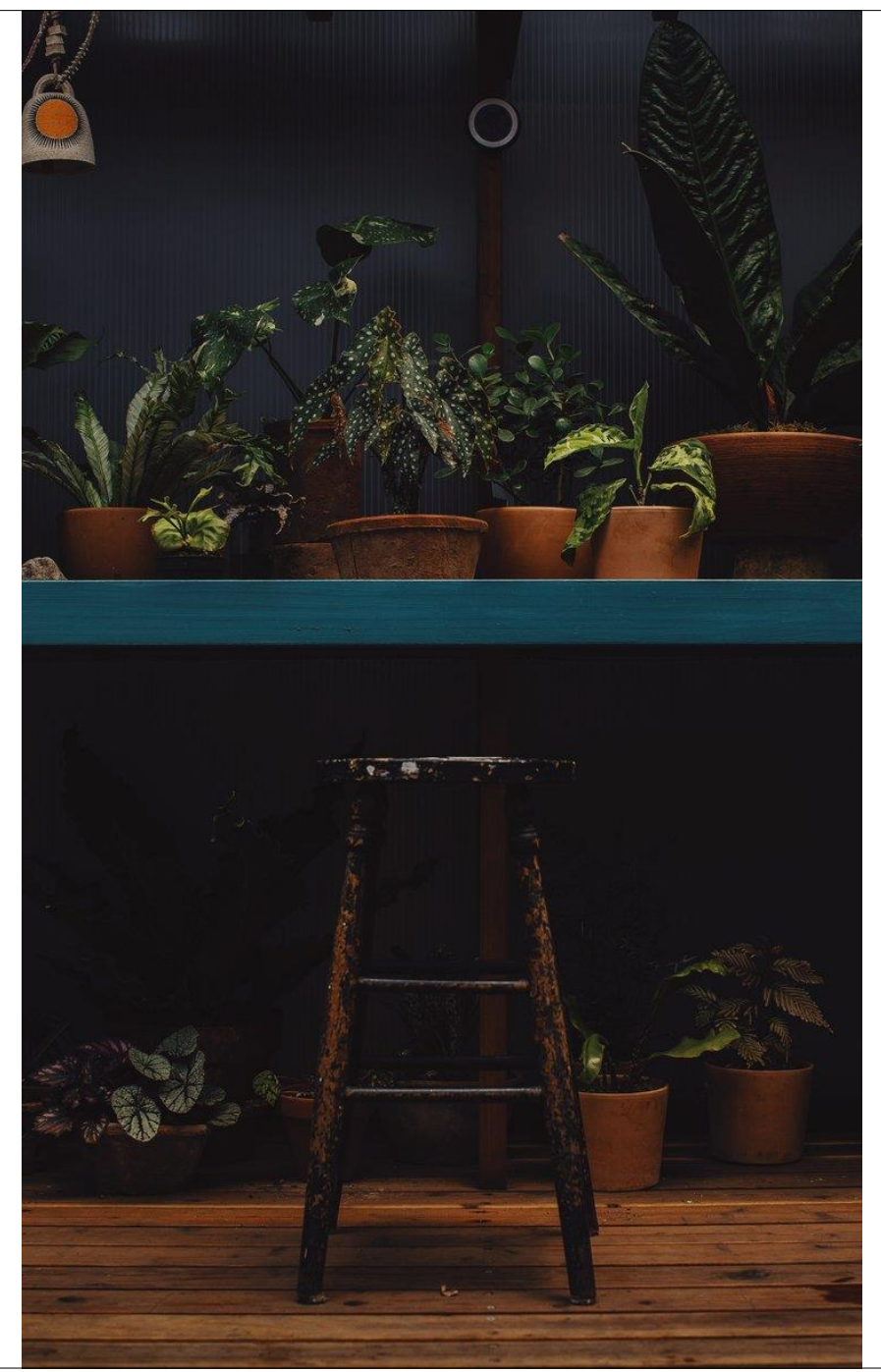
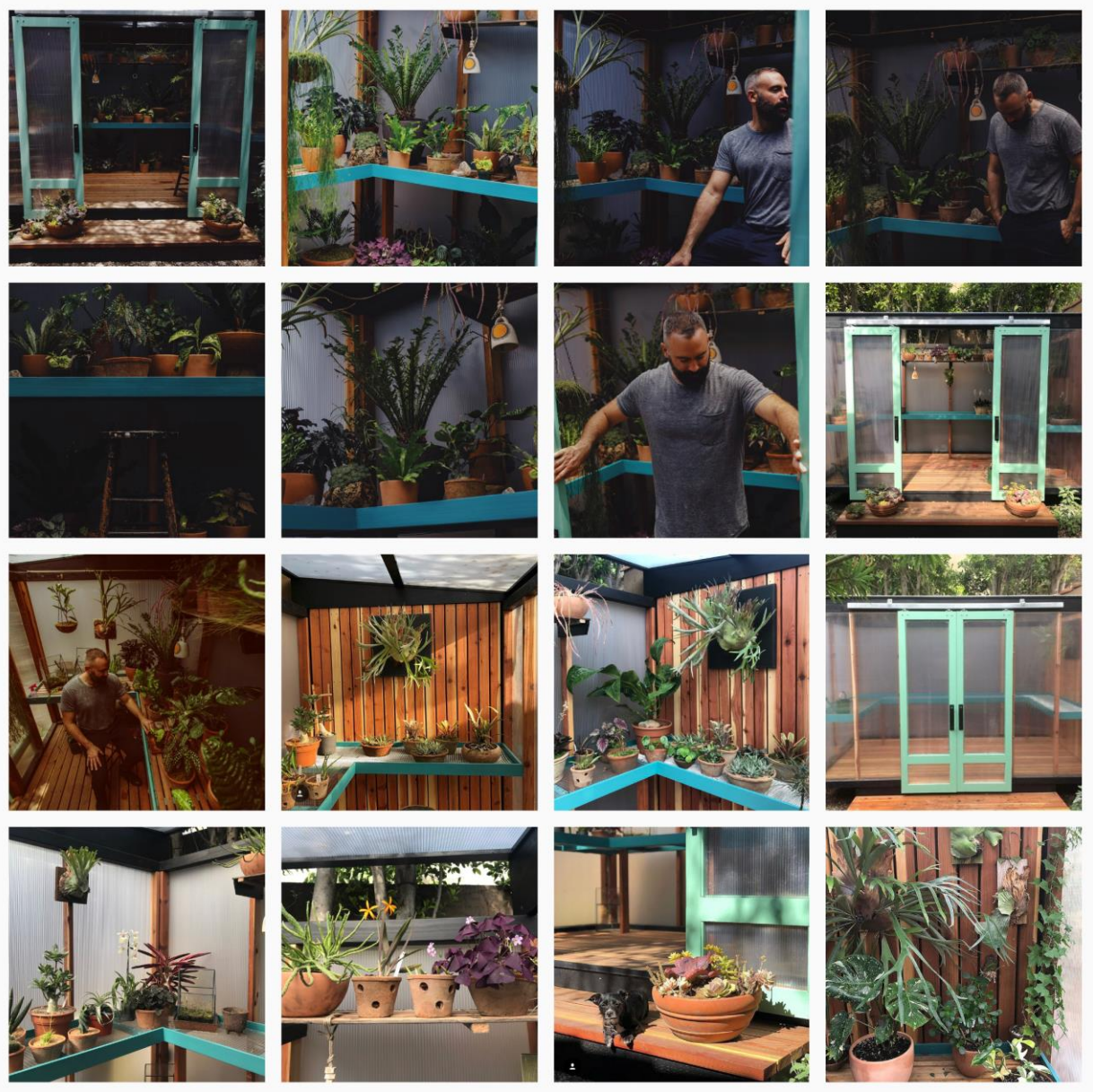
A private greenhouse sanctuary designed to reconnect visitors to the restorative power of nature, meditation, gratitude and contemplation.

I designed/drafted the greenhouse, and worked with a contractor on fabrication/build.

More on project [here](#)

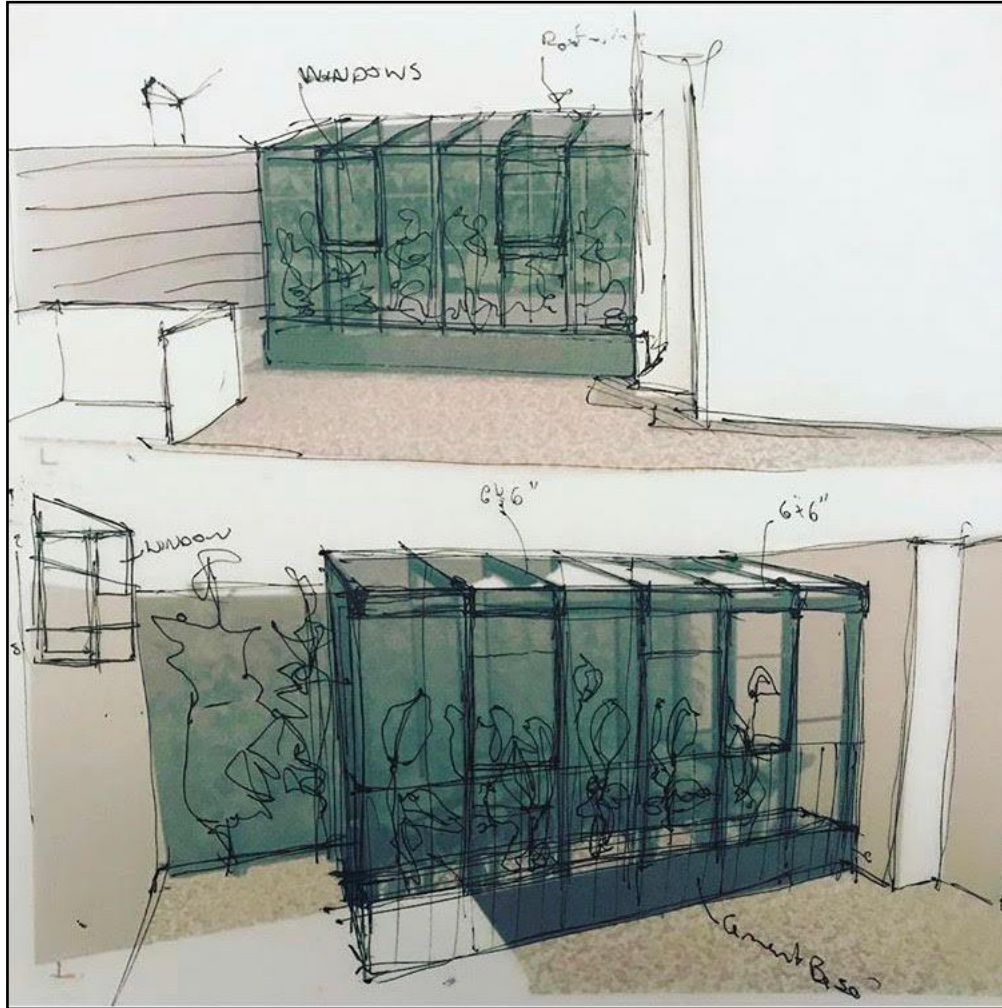


# GREENHOUSE



# GREENHOUSE

Preliminary concept sketches



# BLOOM AND PLUME CAFE

Dance Theater, Studio Workshop: A flexible, adaptable & distinctly Bloom and Plume multi-use outdoor space incorporating a green space, cafe, showroom, recording studio and dance floor. Inspired by the founder, Maurice's life, as well as my own childhood growing up in a house where my mother ran a dance studio, and my father a painting workshop.

More on project [here](#)



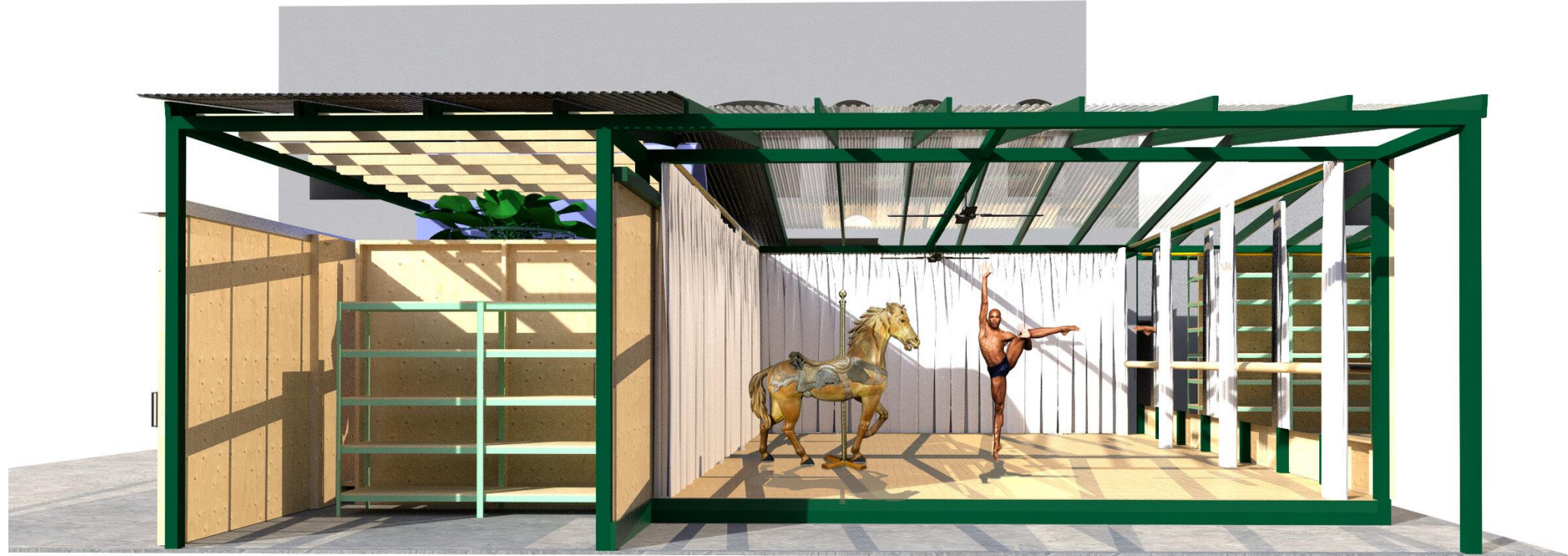
# DESIGN ELEMENTS



Provides a boundary of street protection, solace and sound-deadening AND.. That feminine vibe..

- 'Sound Buffer' Gate way
- Feminine
- Simple
- Joy in Repetition
- Consistent with B + P Form Language

# BLOOM AND PLUME CAFE



DANCE STUDIO MODE



PRODUCTION MODE

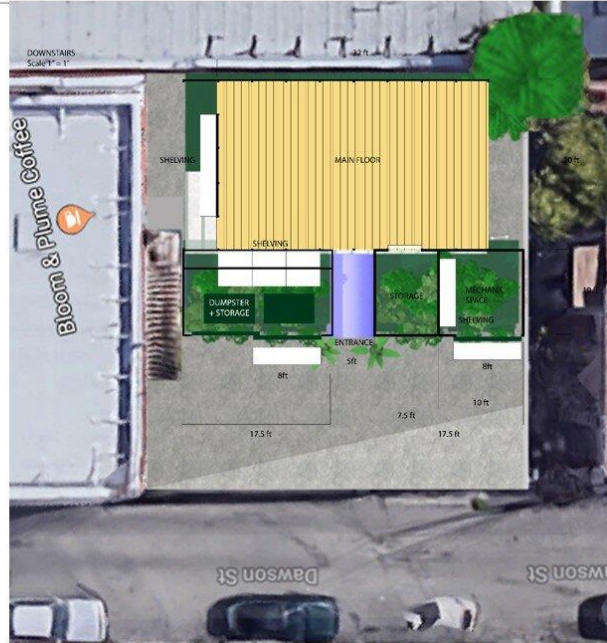
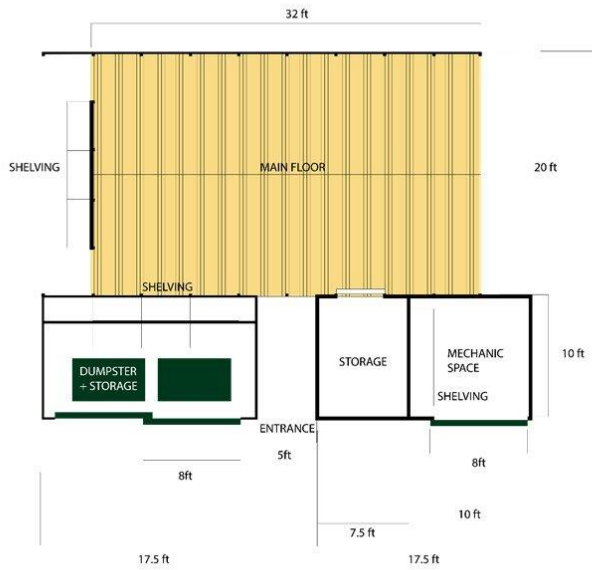


MULTI-USE MODES: WORKSHOP MODE



# BLOOM AND PLUME CAFE

## PLAN VIEW: MULTI-USE SHADED DECK + 2 STORAGE STRUCTURES



## SHELVING UNITS



GABRIEL WARTOFSKY DESIGN

## STORAGE UNITS



SLIDING BARN DOORS  
(SOME HIDDEN FOR THIS ILLUSTRATION)

MECHANICS' SHED INTERIOR  
- MODIFIABLE FOR B&P STORAGE

GABRIEL WARTOFSKY DESIGN

# BEN MEDANSKY

3D Modeling + Visualization for a Hotel Mosaic Project for the Proper Hotel, Los Angeles



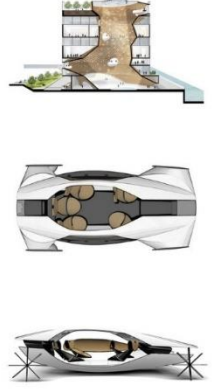
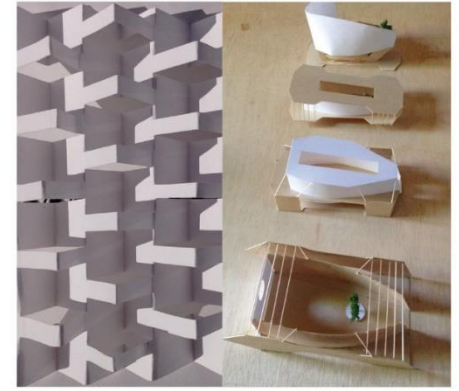
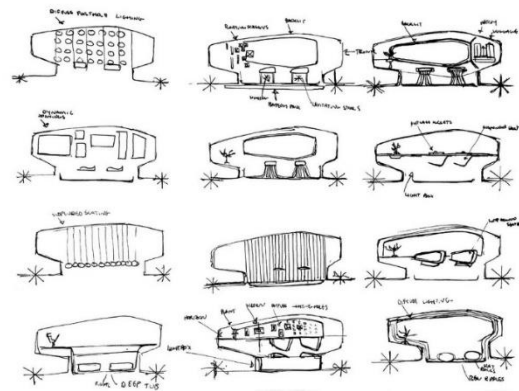
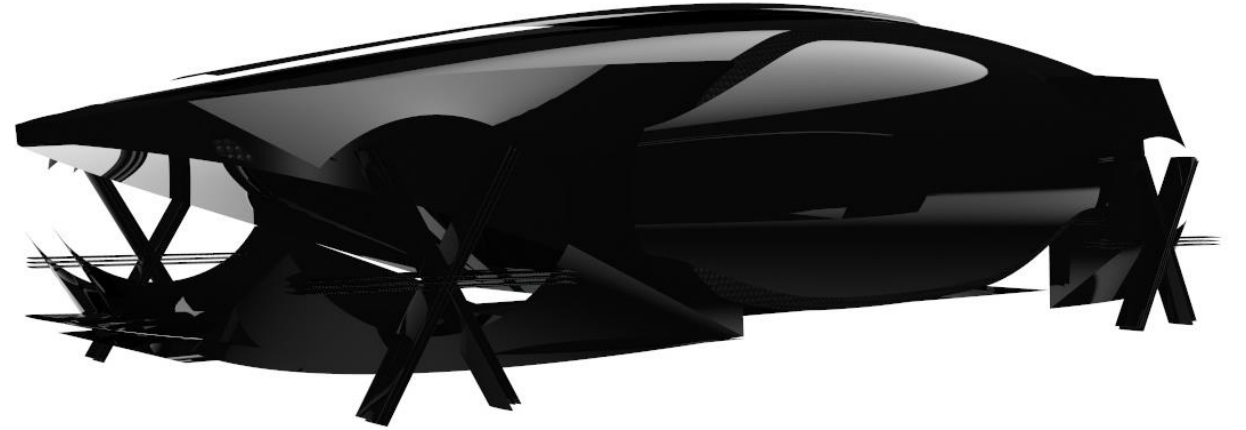
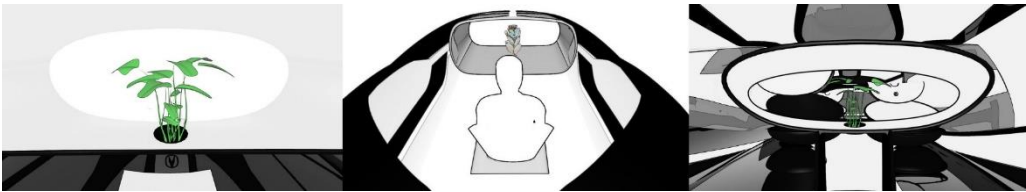


# ACURA AUTONOMY 2040

Consulted with Honda Advanced Design in 2014 to envision an autonomous luxury passenger experience for the year 2040.

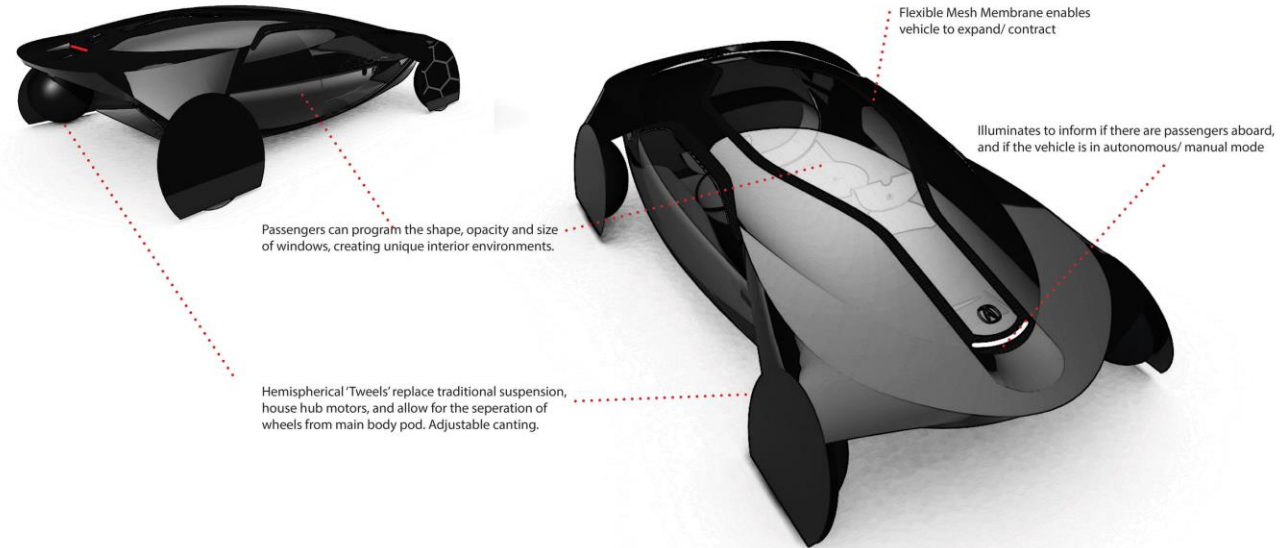
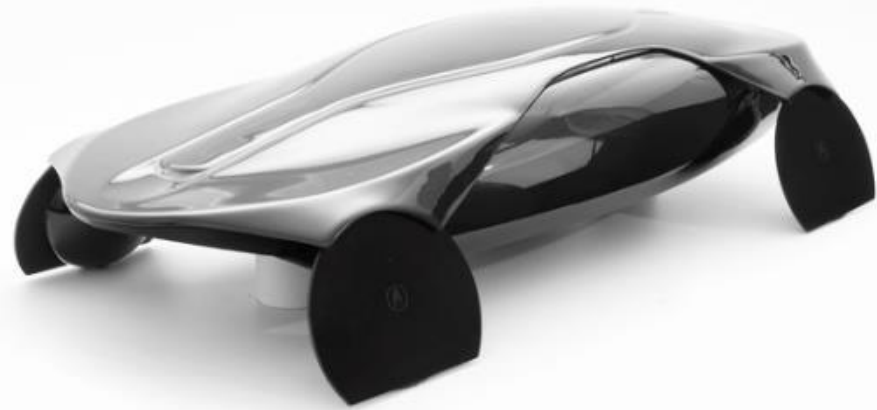
Autonomy 2040 builds a future steeped in ritual traditions of craft, ceremony and contemplation.

Click [here](#) for more on multimedia/fabricated physical project deliverables.



# ACURA AUTONOMY 2040

A conceptual branded autonomous luxury passenger experience for the year 2040 that combines emerging innovation with timeless rituals.



5<sup>th</sup> Scale physical model + Digital Model

# TEXINO ATRIUM

I previously served as Design Director at [Texino](#), a LA-based builder of thoughtful, innovative products intended to help get more people outside.

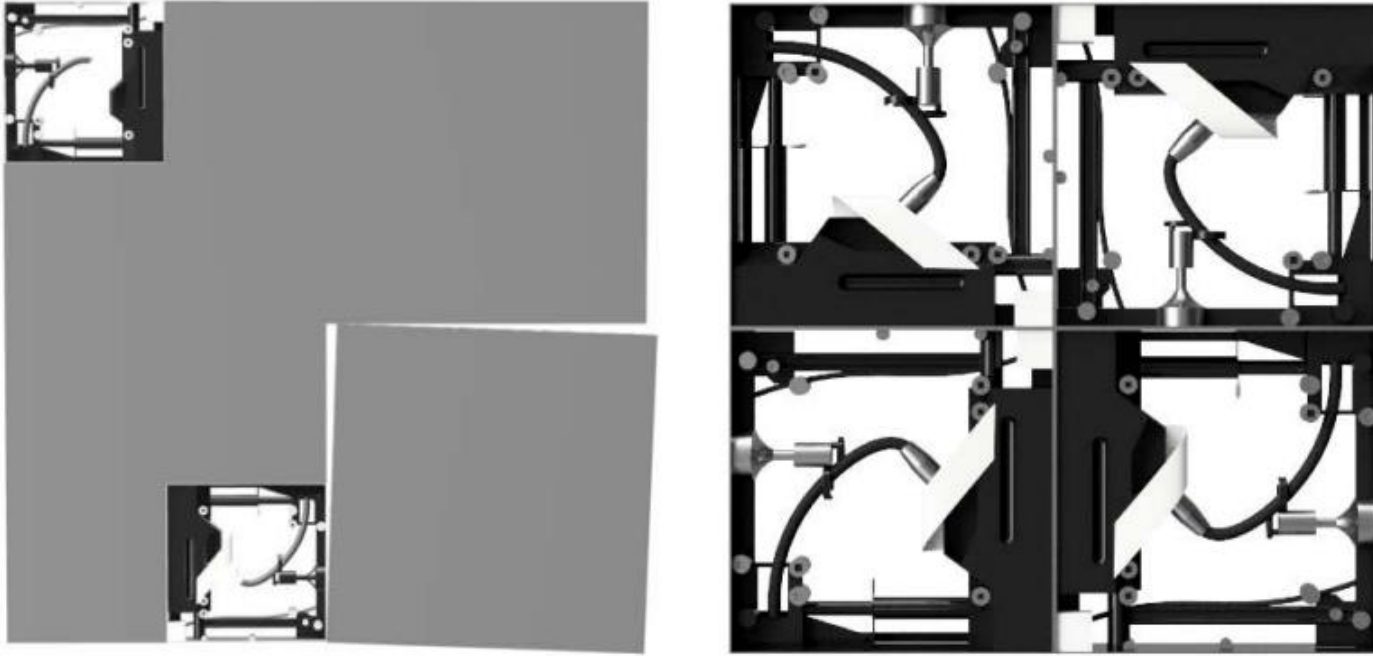
I oversaw Texino's daily design operations as well as its expansion into other emerging mobile service sectors: Box Campers, Mobile/Tiny Homes, Disaster Relief trailers, Medical Vans and Ghost Kitchens.



# **XR ACTIVATIONS**

# ENRIQUE AGUDO STUDIO

3D Modeling + Visualization of a series of deconstructed micro-tile installations for an immersive VR Experience



# EPOCH GALLERY

'A COSMIC CAMERA'

Assisted Artist Peter Wu in 3D modeling  
The city block surrounding the Centre d'Art Contemporain Genève  
For a mixed reality exhibit

15 NEW WORKS  
COMMISSIONED  
& PRODUCED BY:

GENTRE D'ART  
CONTEMPORAIN  
GENÈVE

CURATED BY  
NORA N. KHAN  
& ANDREA BELLINI

BIENNALE DE L'IMAGE  
EN MOUVEMENT 2024

# A COSMIC MOVIE CAMERA

24.01 - 16.05.2024

BASEL ABBAS & RUANNE ABOU-RAHME  
ALFATIH  
AMERICAN ARTIST  
DANIELLE BRATHWAITE-SHIRLEY  
SHEILA CHUKWULOZIE  
FORMAFANTASMA  
AZIZ HAZARA  
INTERSPECIFICS  
LAWRENCE LEK  
SHUANG LI  
LAUREN LEE MCCARTHY  
SAHEJ RAHAL  
JENNA SUTELA  
EMMANUEL VAN DER AUWERA

SCENOGRAPHY BY GIACOMO CASTAGNOLA

CLICK TO ENTER

E P O C H

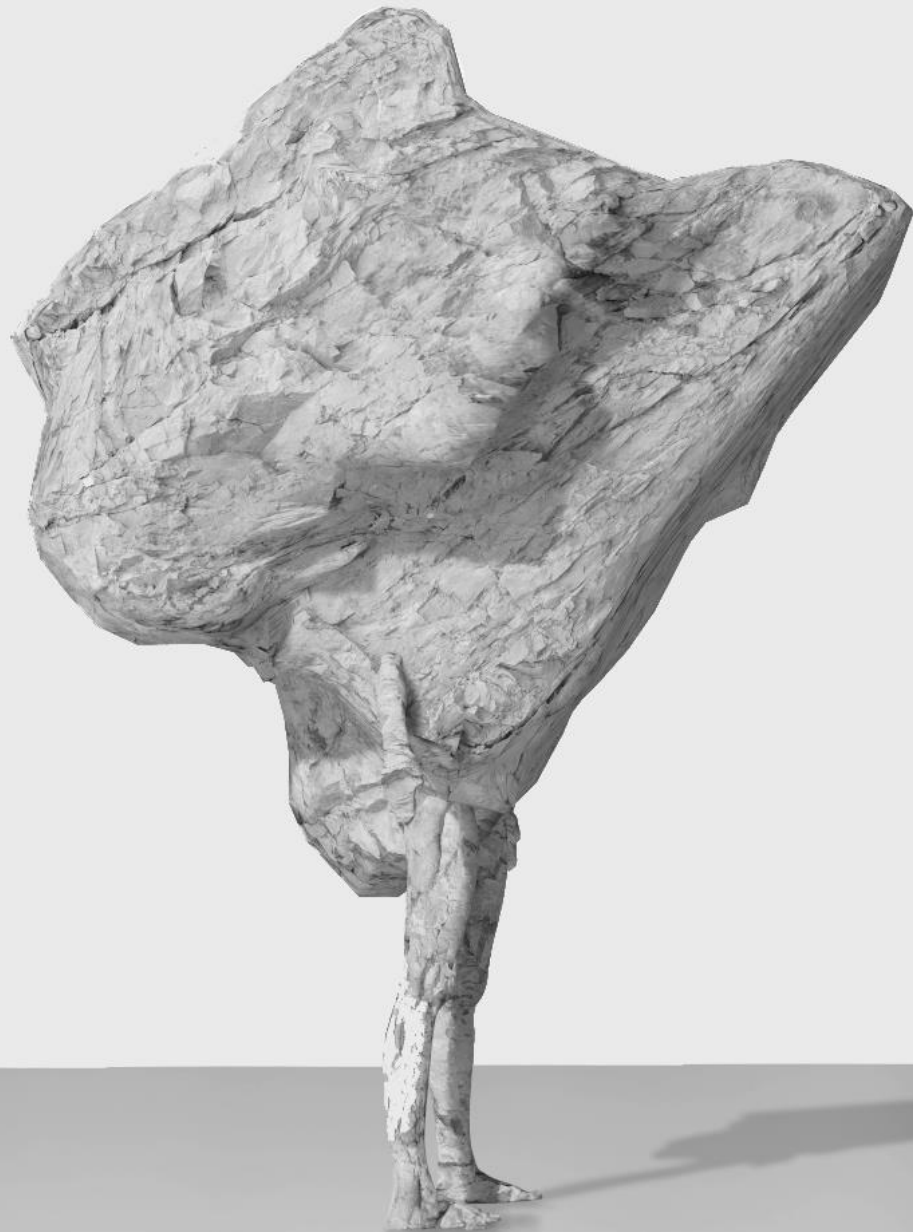
LOTTERIE ROMANDE  
FONDAZIONE CASANOVA  
BASILEENSE  
FONDAZIONE LEONARDO  
1875  
FINANCE  
F C A C  
fonds national  
d'art contemporain  
VILLE DE GENEVE

# EPOCH GALLERY

[‘A COSMIC CAMERA’](#)

Assisted EPOCH Gallery in 3D modeling the city block surrounding the Centre d'Art Contemporain Geneve for a mixed reality/digital twin of their physical exhibition

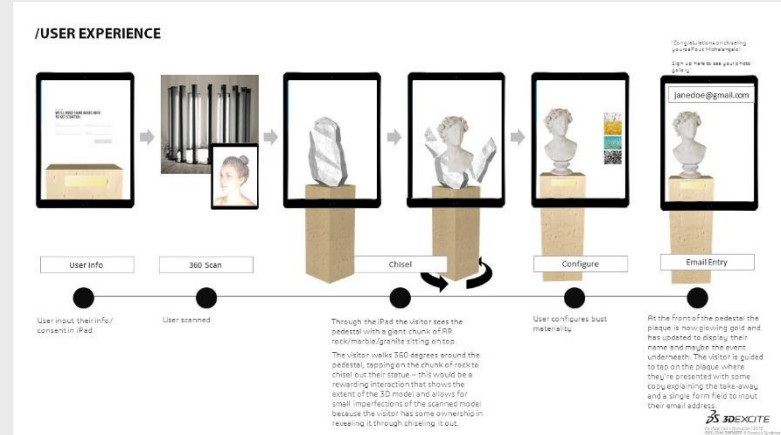




# BUSTED

A collaboration between 3DEXCITE, DELL and LensCloud 3D, BUSTED is an interactive trade show activation designed to educate users about the digital prototyping process, distributed cloud rendering and 3D shareability. Upon entering the Photogrammetry 3D Scanner, visitors are scanned, their likeness rendered and output to an iPad in AR where they interact with a raw block of marble to 'carve' and customize their 3D Bust.

More on project [here](#)



THE LUXURY TECHNOLOGY SHOW

CONCEPT 2: AVATAR MASHUP

CONFIGURE AVATAR WITH MIX AND MATCH BODY PARTS AND ACCESSORIES





# **DRAWINGS + FABRICATION**

# TEXINO TINY HOME

Design Brief + Development

A design/build proposal envisioning a Texino Tiny Home designed for vacation rental/hospitality applications

Designed in collaboration with Ouida Biddle.

Design Criteria

- Mobile/Trailer Mounted
- Built to \$100,000 Price



TEXINO

## UNIQUE FEATURES

OUTDOOR MUDROOM/SHOWER - FOR KEEPING INTERIOR CLEAN  
(SHOWER CURTAIN CAN PROVIDE A PUNCH OF COLOR/PATTERN)

DRAWBRIDGE DECK- LOUNGE + AREA + ENHANCED SECURITY

LOFT SKYLIGHTS- FOR STAR GAZING IN BOTH BEDS



## MATERIALITY

METALLIC SHELL MEETS MINIMALIST INTERIOR





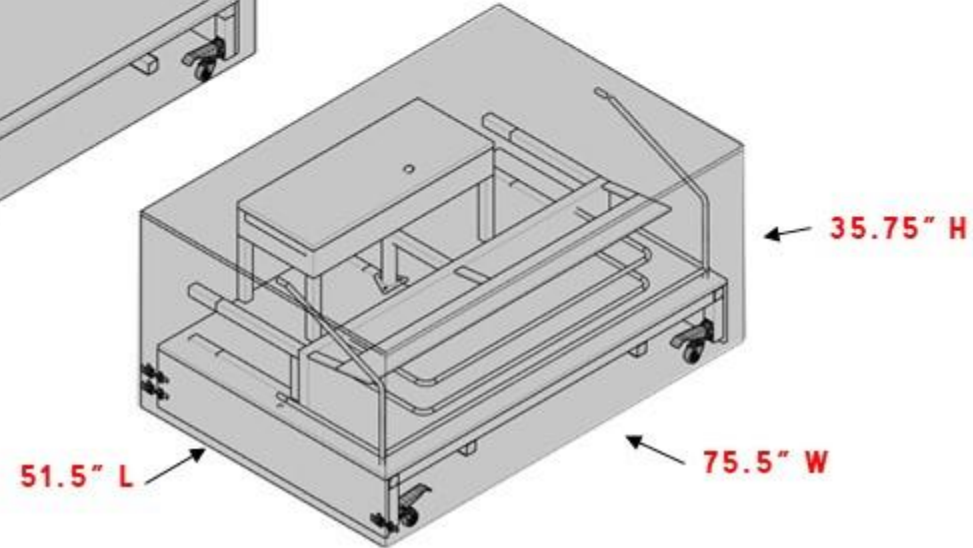
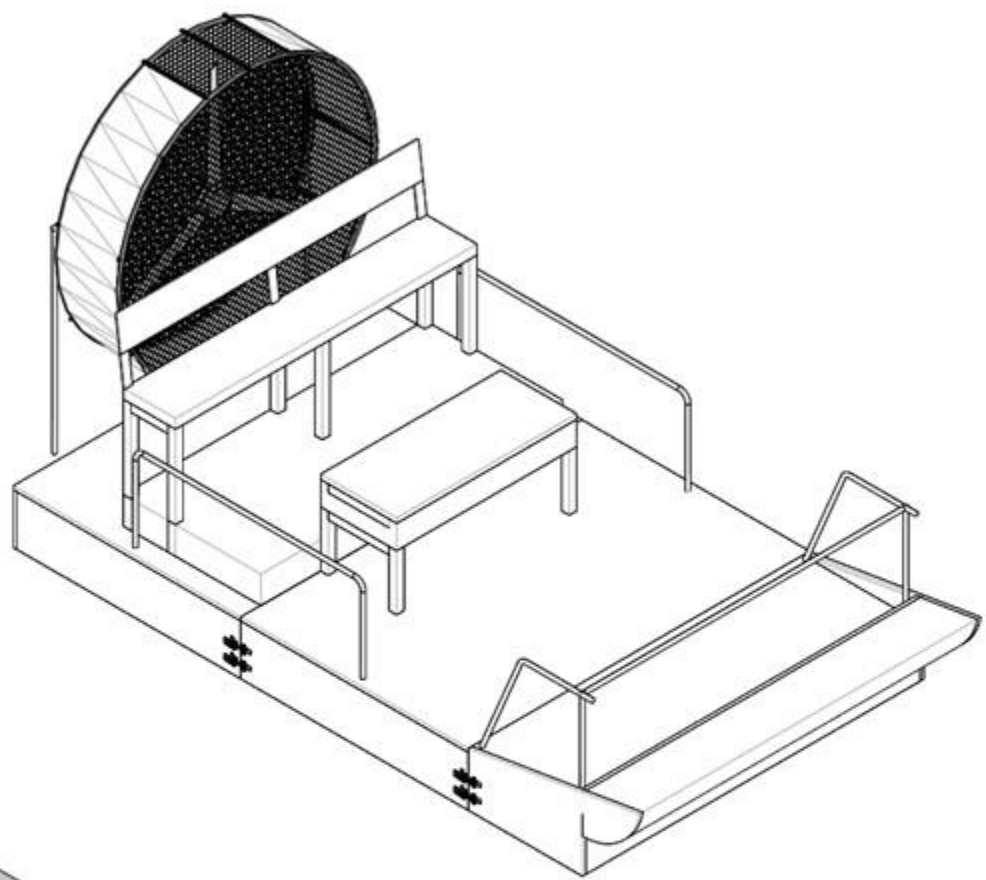
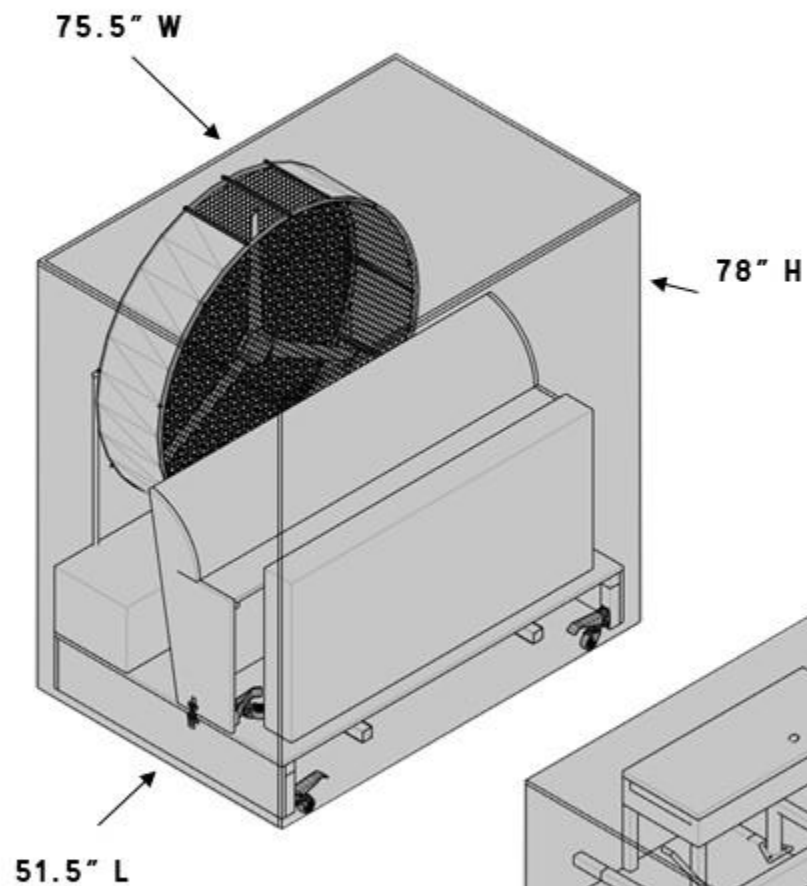
# DOECHII/DOJA CAT TOUR SWAMP BOAT

Worked with Winston Studios- Responsible for design/fabrication of Doechii's tour prop Swamp Boat- primarily it's design for disassembly/transportation, and ability to roll/ spin in stationary position for choreography pieces.



# SWAMP BOAT CRATE DIMENSIONS

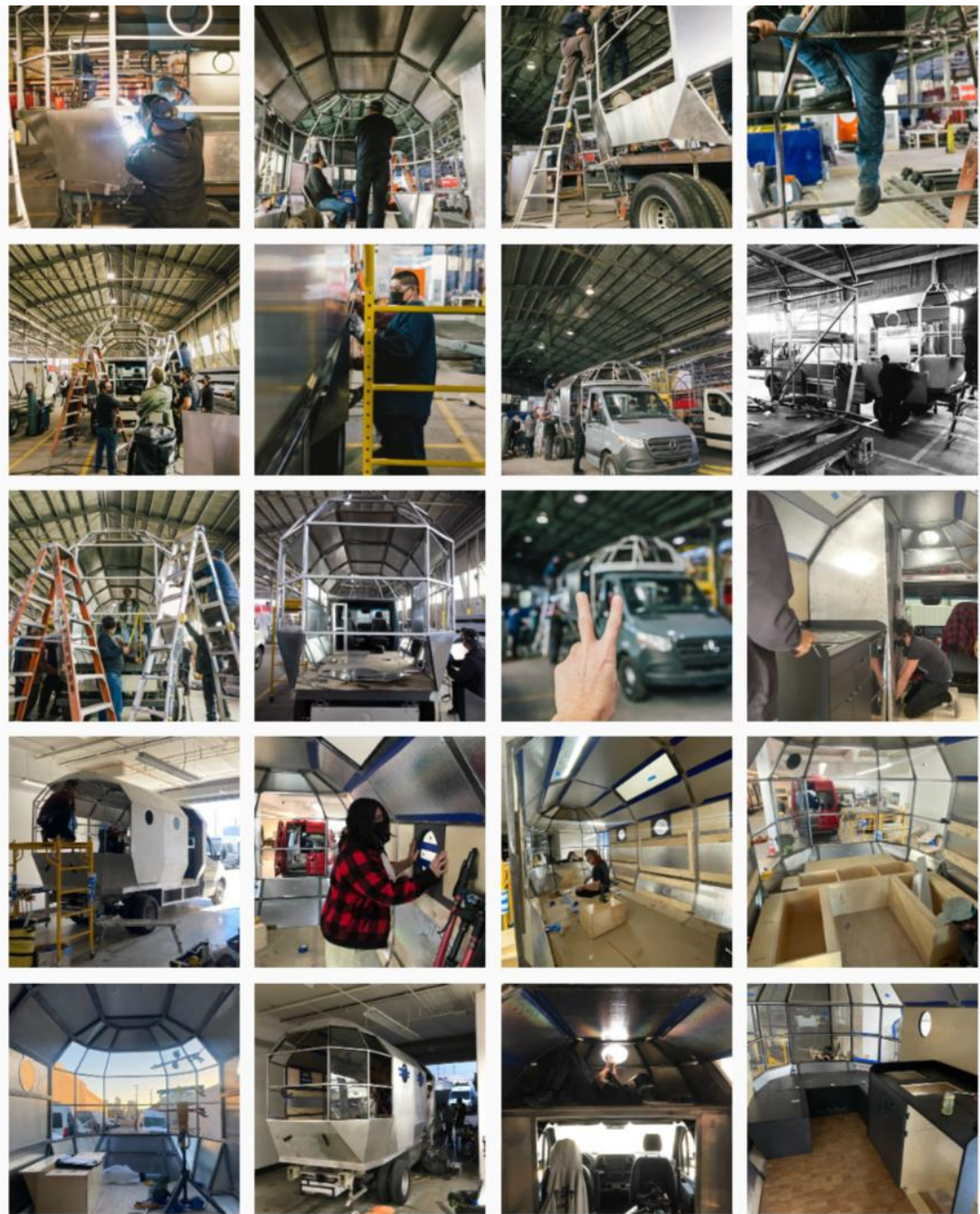
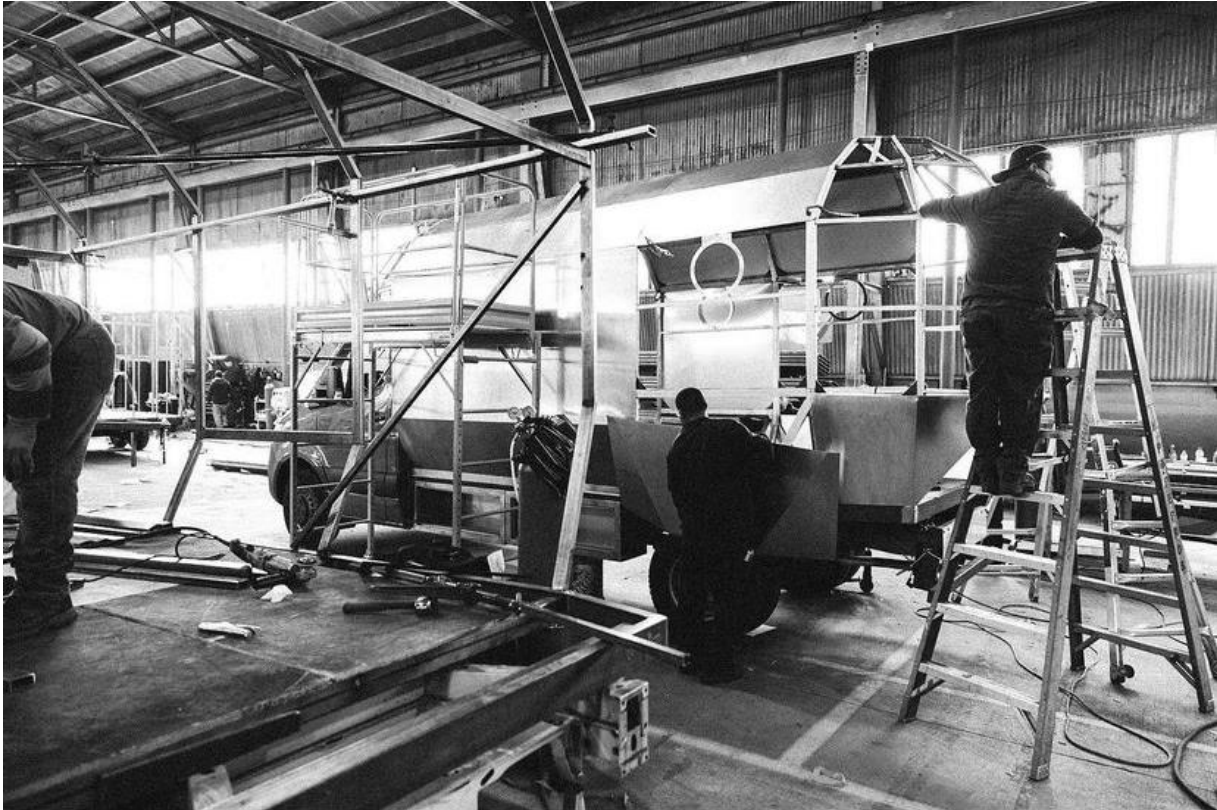
CRATE I  
51.5" L  
75.5" W  
78" H



CRATE II  
51.5" L  
75.5" W  
35.75" H

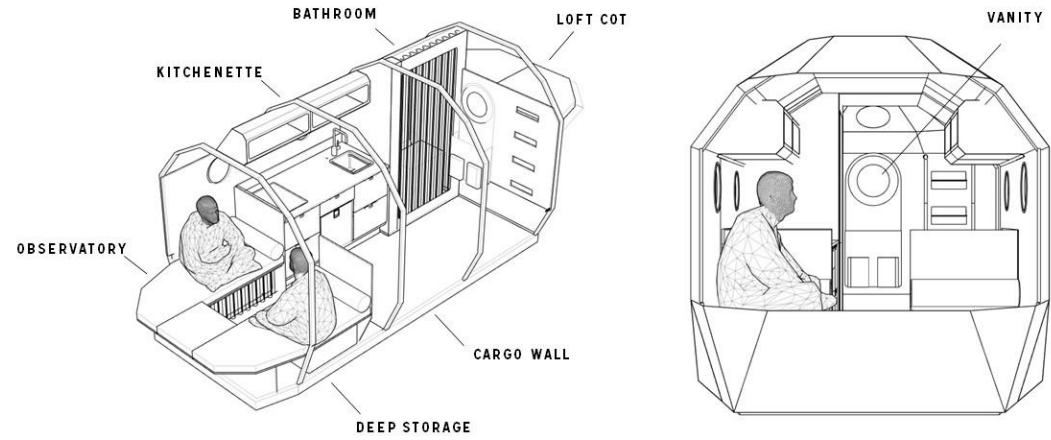
# TEXINO ATRIUM

Prototype I + II Build Process:  
Hand built proof-of concept box campers utilizing the Mercedes Sprinter flatbed platform



# TEXINO ATRIUM

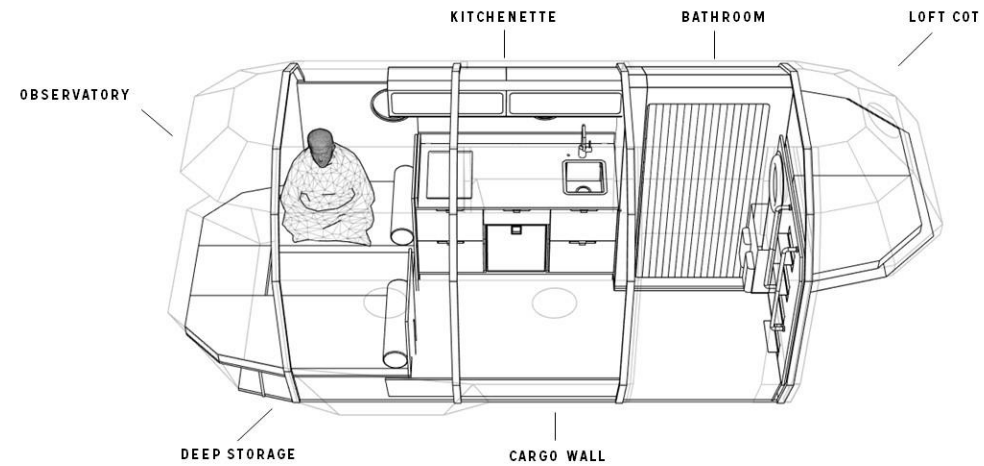
## INTERIOR



TEXINO



## INTERIOR

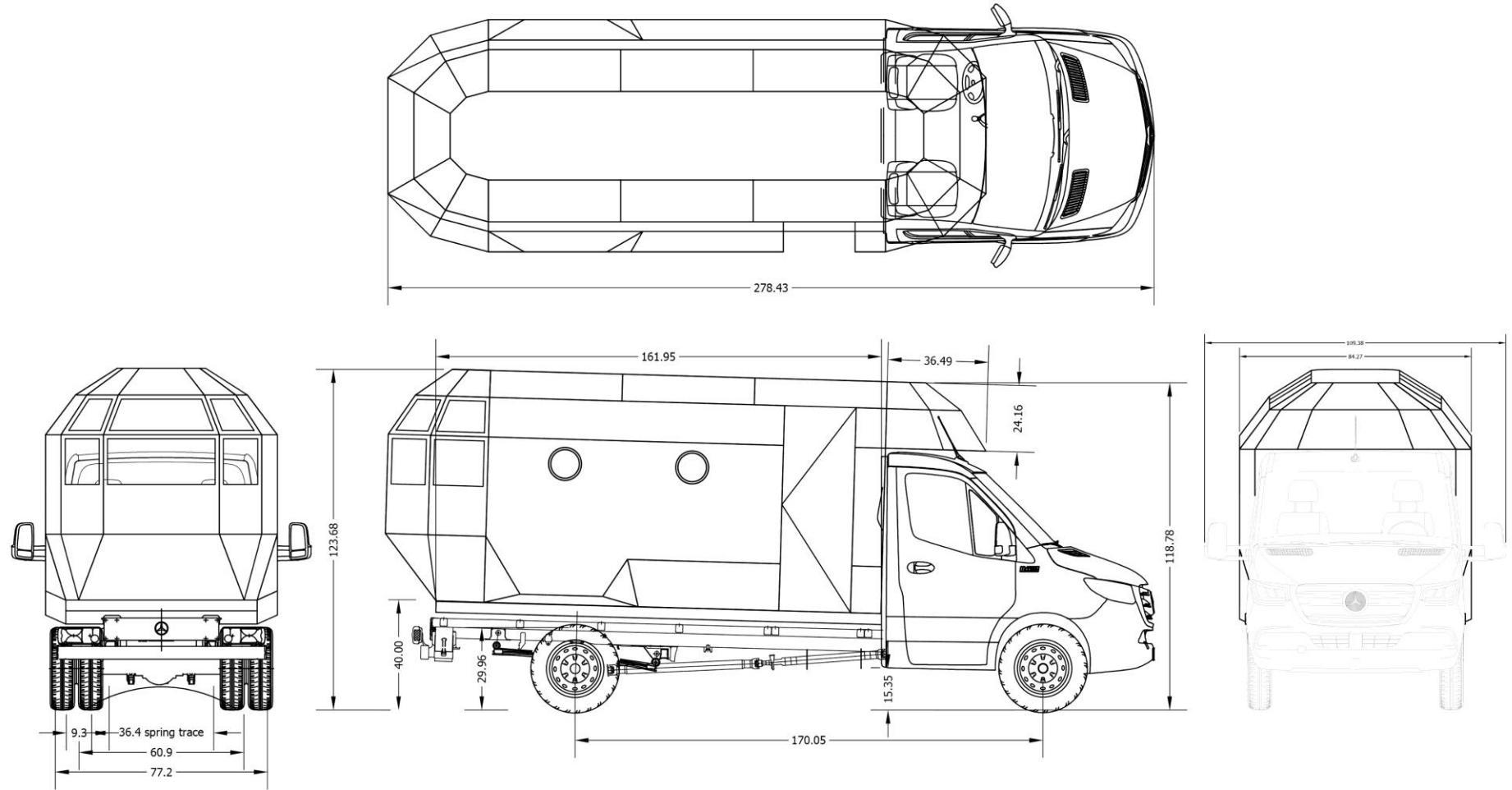


TEXINO



# TEXINO ATRIUM

Package Diagram



TEXINO DESIGN DEPARTMENT  
1440 N SPRING ST.  
LOS ANGELES, CA 90012

UNLESS OTHERWISE SPECIFIED DIMENSIONS  
ARE IN INCHES (IN)  
TOLERANCES: 1 PLACE ± .1 2 PLACE ± .01  
3 PLACE ± .005 4 PLACE ± .0050  
ANGLES 30° FINISH 62 u IN

SAMPLE MUST BE APPROVED PRIOR PRODUCTION

DESIGN G. WARTOFSKY 12/09/21

DRAWN

CHECKED

APPROVED

REV

DATE

PRELIMINARY

REVISED & RESUBMIT

FOR CONSTRUCTION

PROJECT NO.

DWG NO.

PROJECT

VAN MODEL

TITLE

BOX CAMPER

DO NOT SCALE DRAWING

SCALE

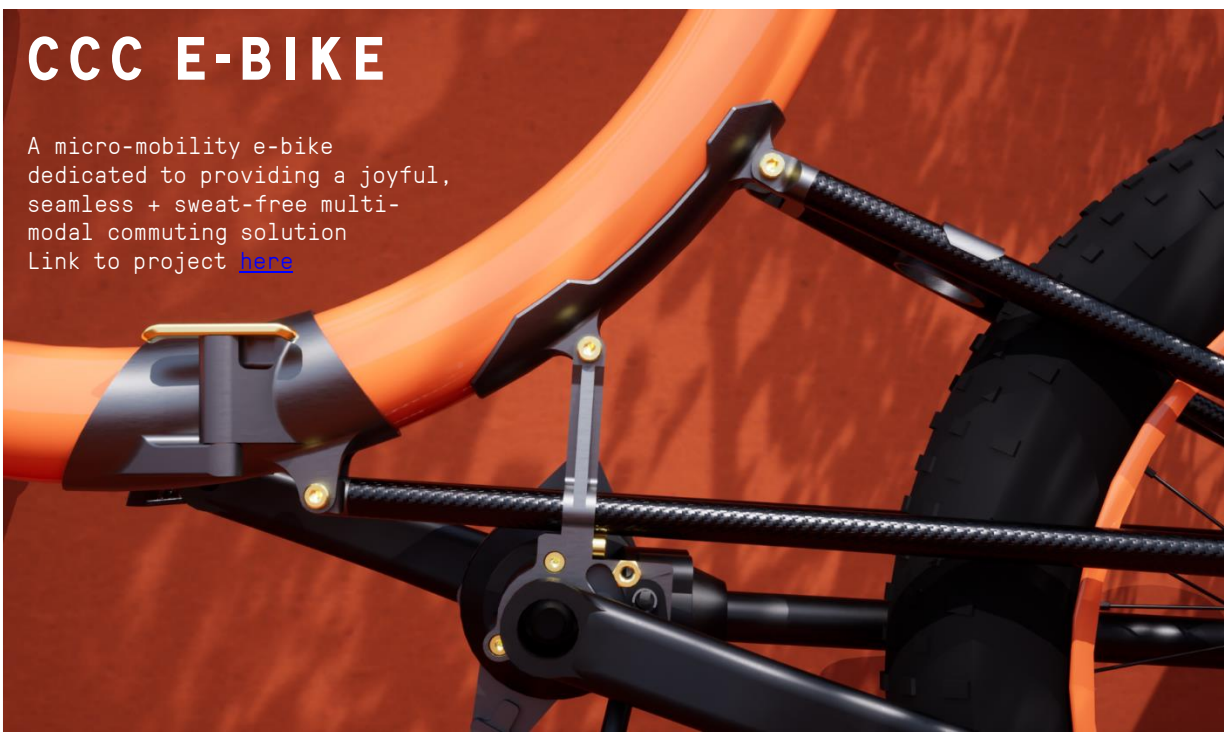
SHEET NO.

SHEET



# CCC E-BIKE

A micro-mobility e-bike  
dedicated to providing a joyful,  
seamless + sweat-free multi-  
modal commuting solution  
Link to project [here](#)





**THANK YOU!**