

GABRIEL WARTOFSKY PORTFOLIO

A BRIEF INTRODUCTION

First and foremost, thank you for taking the time to review my portfolio.

My design ethos is simple: I leverage design to [re]connect people to the joy of everyday life.

I create foundational concepts steeped in optimism-intimately collective 'safe spaces' that catalyze the creativity, engagement, collaboration and contemplation for those who desire to participate.

The root of my calling stems from a family of dancers, painters, story-tellers and civil workers.

I'm an optimist: a futurist at heart whose led a successful career converting innovative concepts into award-winning products, spaces and experiences.

While my career spans across industries, my dedication to developing and promoting desirable, human-centered solutions remains a consistent thread.

If you'd like to take a deeper dive into my work and enjoy some of the multimedia aspects of each project, please visit my [website](#).

Email me [here](#) if you'd like to continue the conversation.



TABLE OF CONTENTS

JOY MACHINES

- CCC e-Bike
- KIT-e Bike
- HOPI ATV

CAMPERS + RV'S

- Texino Atrium
- Texino Venture II
- Bedouin EV

BRANDED/INTIMATE SPACES

- Wingtip Amador
- Greenhouse
- Acura Autonomy 2040
- Bloom + Plume Cafe
- Poke Backpack

TINY HOMES

- Texino Tiny Home
- Floating Home
- Hypercube

PRODUCTS + OBJECTS

- Nimbus
- Sirak Studio Vessel Collection
- Sirak Studio Chair Collection
- Ben Medansky Ceramics

XR ACTIVATIONS

- BUSTED Photogrammetry Event
- AUTOMOTO AR

JOY MACHINES

Vehicles Rooted In The Joy Of Movement

- CCC e-Bike
- KIT-e Bike
- HOPI ATV

CCC E-BIKE

A micro-mobility e-bike dedicated to providing a joyful, seamless + sweat-free multi-modal commuting solution



CCC E-BIKE

In 2011, I co-founded Conscious Commuter Corporation (CCC), a micro-mobility e-bike[share] start-up dedicated to providing joyful, seamless multi-modal commuting solutions. I served as the Chief Designer and COO, overseeing the design and development of its core product, a modular family of e-bikes I started designing during my senior year at Art Center College of Design in Pasadena, California.

While ultimately a bit before its time, this experience honed my ability to sell a vision; one that ultimately captured the attention of progressive investors, consumers, city-planners, municipal, state and federal research organizations, academic institutions, international design and thought-leadership communities, Silicon Valley big-wigs... and children. We managed to take the seed of a 'napkin sketch' concept, and develop it into an award-winning product portfolio that helped shape the template for today's spectrum of electric urban micro-mobility solutions. The ultimate metric of this e-bike's success was that it put a smile on everyone's face.

More on project [here](#)





CCC E-BIKE

Press

Bloomberg

Business Want to Build the Next Pinterest? Focus on Great Design

By [John Tozzi](#)
June 26, 2013, 2:51 PM PDT

2:51 PM PDT
Watch Live TV
Listen to Live Radio



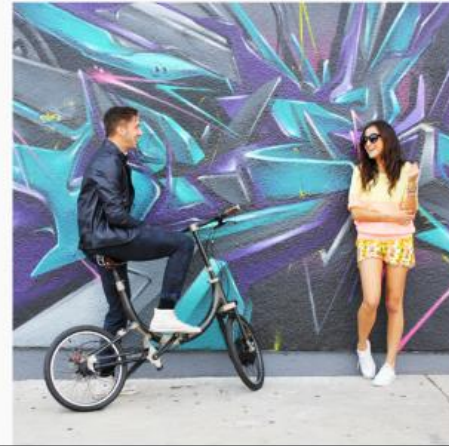
Conscious Commuter's folding electric bicycle, which is part of the company's multi-modal electric bike share solution to reduce single occupancy vehicle commuting. Photograph by Gabriel Wartofsky/Conscious Commuter Corporation



domus



Top: The impossibility of producing the HiddenRadio through standard channels led Vitor Santa Maria (left) and John Van Den Nieuwenhuizen to try Kickstarter. Above: Gabriel Wartofsky worked on his foldable electric bike for two years. The funding he obtained allowed him to have 100 units produced



CCC E-BIKE

Design Development stemmed from my Art Center thesis project exploring multimodal system integration between e-bikes, buses and transit hubs.

'Minding the Gap' is a multi-modal transit system designed for Transport for London that integrates an electric bike-share, smart bus hub network and a multi-tasking re-designed RouteMaster bus to increase both the efficiency and desirability of London's iconic public transit.

The most important element of the bike is the unique way in which it relates to the city, the system and the user.

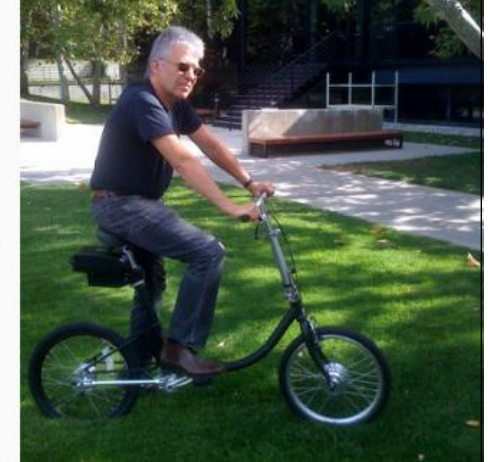


CCC E-BIKE

Prototype Development

Prototype 001: 'Frankenbike'

The objective of Prototype 001 was to build a working test mule to prove out the fundamental frame design geometry, evaluate components and electric drive systems, and to collect consumer insight during multiple events



Prototype 002: 'Frankenfolder'

The objective of Prototype 002 was to evaluate refined component packaging, folding mechanisms, ergonomics, manufacturability, materials and aesthetics. This prototype also captured the attention of [DOMUS Magazine](#), who featured it in their 2012 Salon Del Mobile exhibition.



CCC E-BIKE

Prototype Development

Prototype 003: 'The Beautiful One'

Prototype 003 was designed and built to showcase the CCC e-bike's full potential: crafted from lightweight carbon fiber and milled titanium, incorporating a bespoke compact battery, and dressed with premium components.



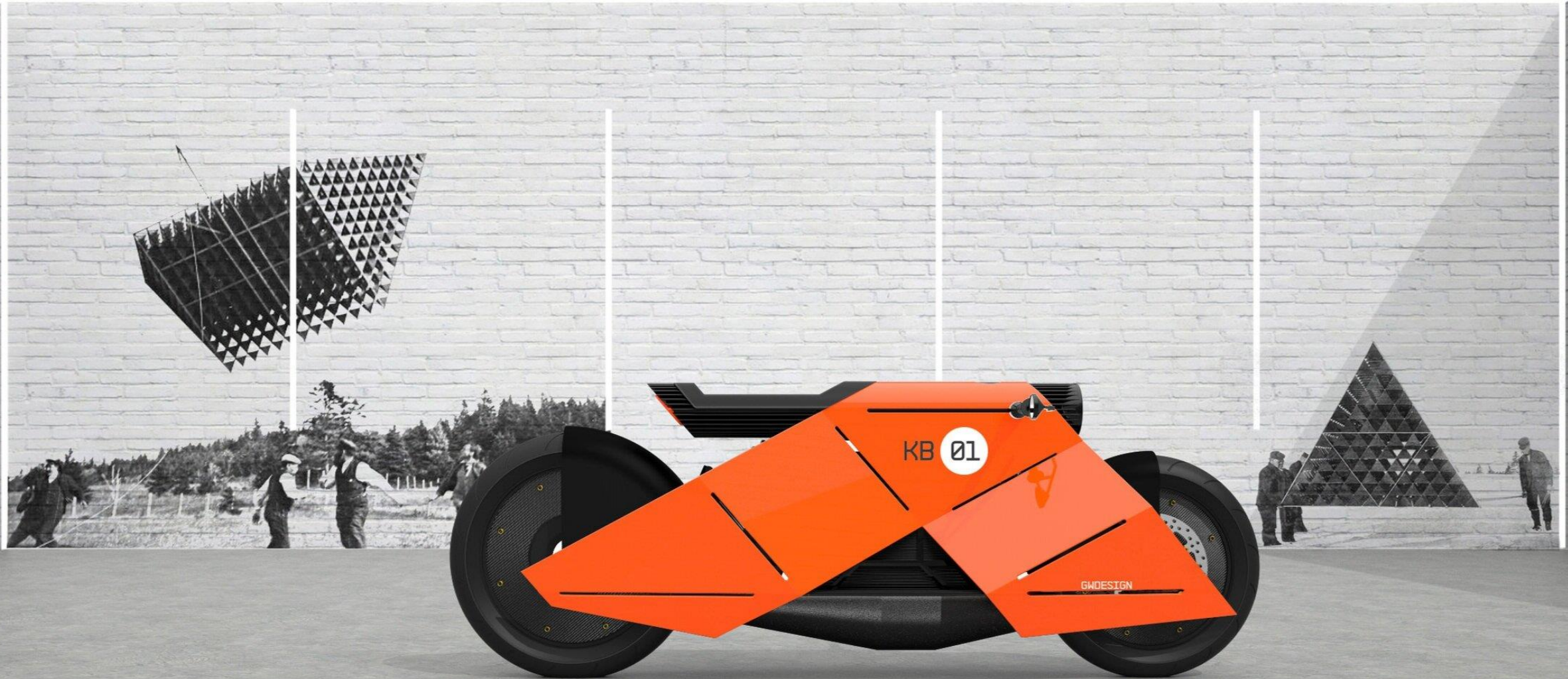
Beta Fleet: The First 50

This series of beta prototypes were commissioned and built for corporate and government partners to evaluate the efficacy of e-bike share systems on corporate campuses and municipalities.



KIT-E BIKE

A design/feasibility study exploring a low-cost build approach for the custom e-bike market.



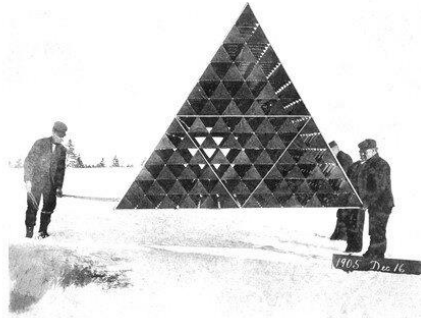
KIT-E BIKE

KEY INSPIRATION

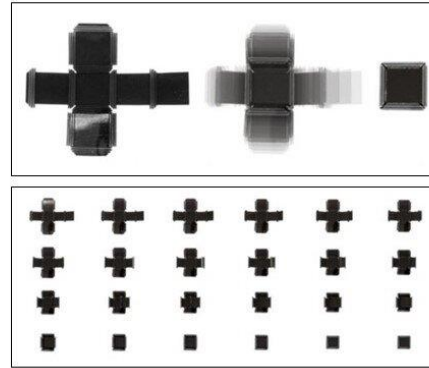
FOLDED SHEET FURNITURE



TETRAHEDRAL KITE GEOMETRY



4D PROGRAMMED SELF-ASSEMBLY



ELECTRONICS HOUSING

COMPOSITE WHEELS



E-MOTOR, TRANSMISSION, SHAFT DRIVE

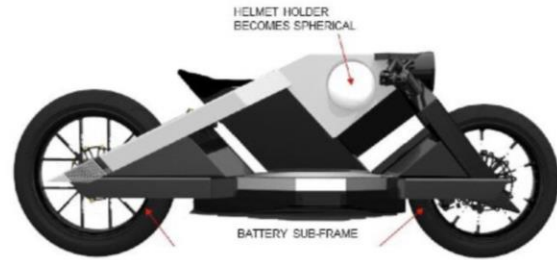
BATTERY CASE SUB-FRAME

TELELEVER SUSPENSION

KIT-E BIKE

2D/3D Ideation

SKETCHES, STUDIES, IDEATIONS: 'NAKED' CAFÉ RACER PROPORTION STUDY



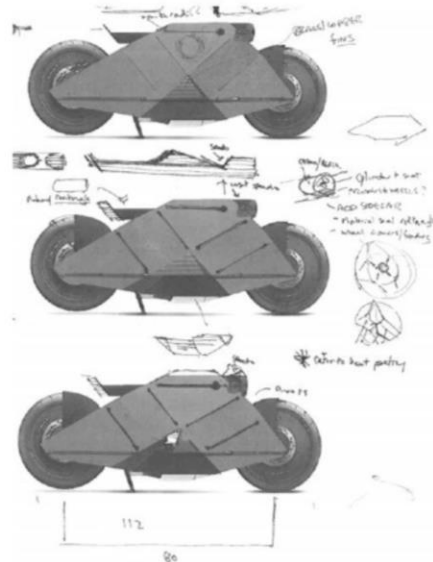
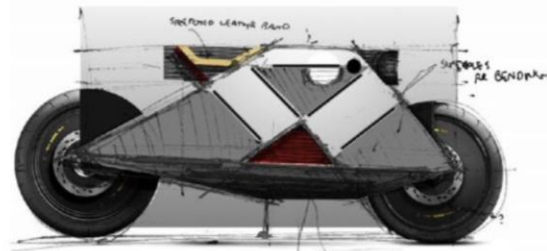
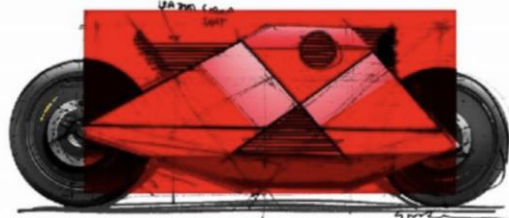
TELELEVER WISHBONE SUSPENSION MOUNTS TO BATTERY SUB-FRAME

BODY FABRICATED WITH FOLDS + EXTRUSIONS



'CAKE SLICE' SLAT MOTIF BECOMES CROSS-SECTIONAL

ONE-PIECE, STUDIED, IDEATIONS



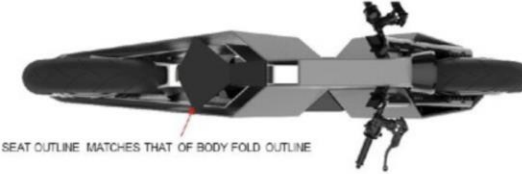
SKETCHES, STUDIES, IDEATIONS: EARLY PROPORTION STUDIES

SEVERE FOLDING YIELDS LOW-RES STYLE CRUISER PROPORTIONS



HELMET HOLDER BECOMES SPHERICAL

MOBILE ORIGAMI



SEAT OUTLINE MATCHES THAT OF BODY FOLD OUTLINE



SLAT MOTIF EXTENDS FROM BATTERIES TO STATIONARY WHEEL COVERS

ONE-PIECE, STUDIED, IDEATIONS, DEVELOPMENT, FINISHED

MATERIAL HELMET HOLDER CUTAWAY EXPOSES SLATS/RECALLS RACING DECALS



BATTERY STACK DOUBLES AS RUNNING BOARD

STATIONARY SLATTED WHEEL COVERS MATCH MECHANICAL SLAT MOTIF

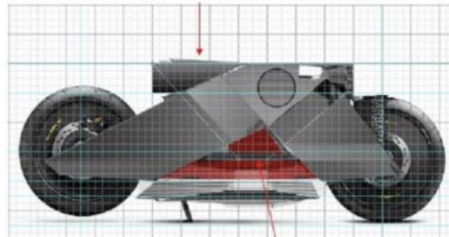
SLATS WHERE METAL FOLDS



TOP TANK RADIUS

PROTECTIVE UNDER-BELLY

BODY ROLLS AROUND UPPER SEAT/LIGHT HOUSING CYLINDER



BATTERY AS HEART OF MACHINE

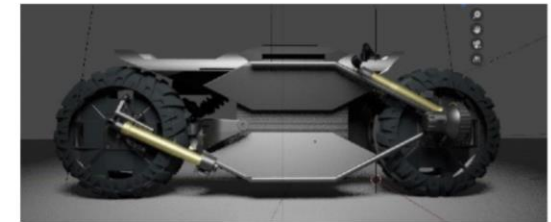
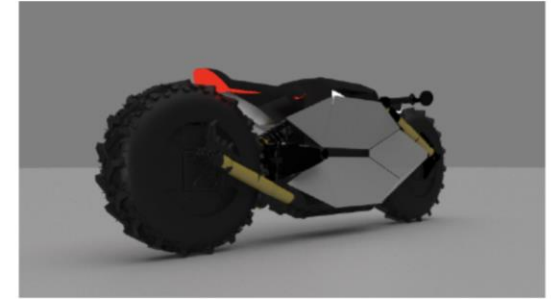
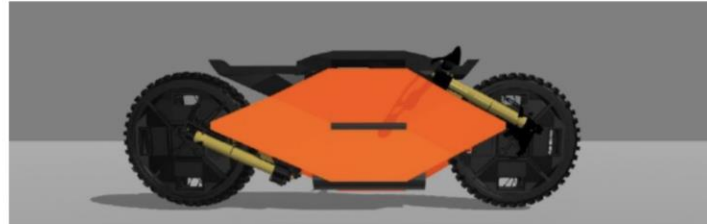
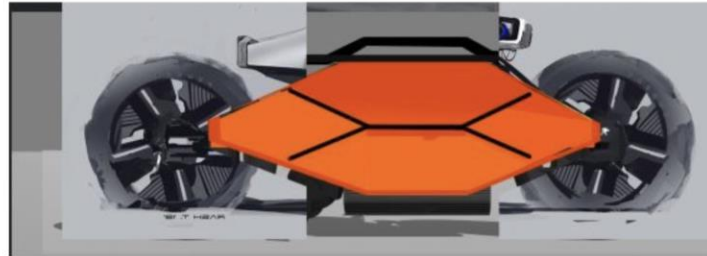
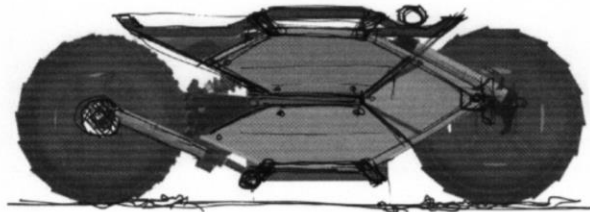
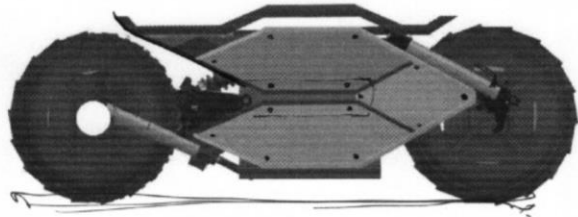
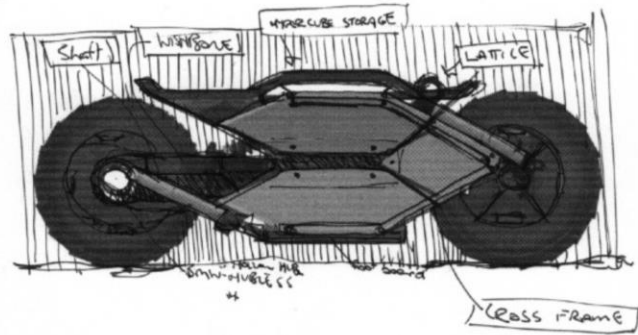


CANTILEVERED SEAT



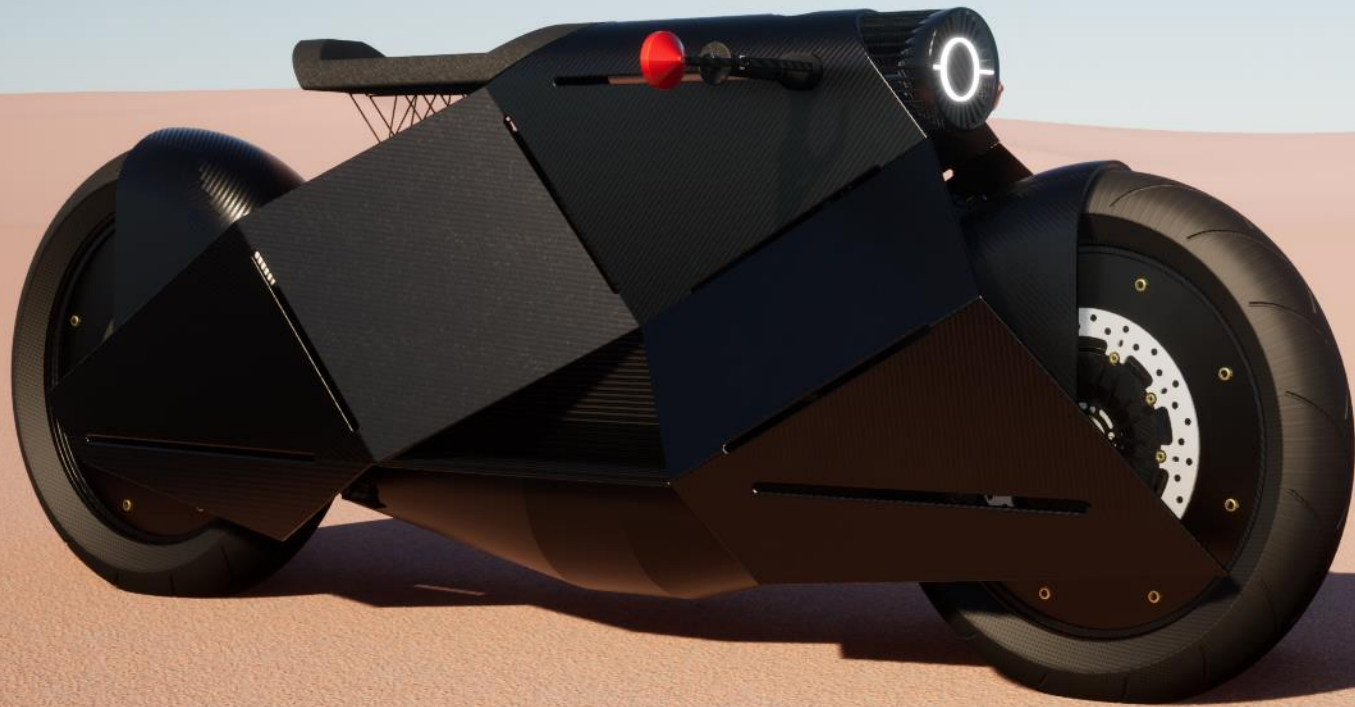
KIT-E BIKE

2D/3D Ideation



KIT-E BIKE

Renders



WARSHIP WAR SHIP

A sketch-book visual essay exploring grief through a journey taken between a protagonist [inspired by my dearly-departed friend] and their mechanical avatar- the motorcycle.

Together, they experience six stages of the ultimate motorcycling journey: Worship, Freedom, Companionship, Fetish, Anarchy and Death.

The raw aesthetic of both motorcycle and animated storyboards reflect the senseless experience that inspired it.

Multimedia link [here](#)



Inspiration collage image stills above were inspired by the works of Aboubacar Traoré's *Inch'Allah* series (2015), archived photography from LIFE Magazine, and Miss Atomic.

HOP1

A modular agricultural ATV Design Study offering both human-piloted + Autonomous Configurations



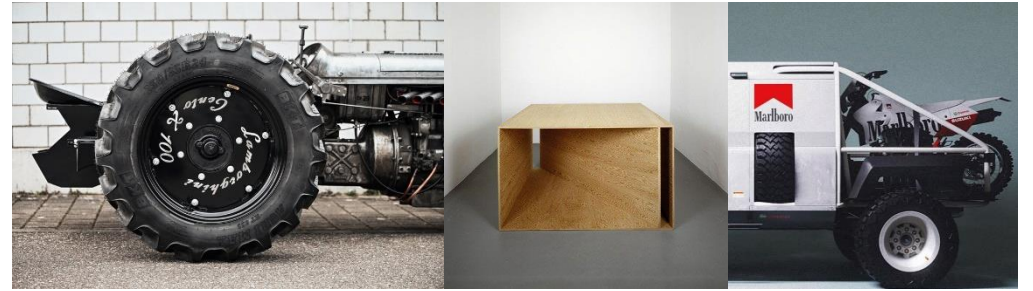
HOPI MOOD BOARD

Design Inspiration: Raw, Utilitarian, Proletariat + Rugged



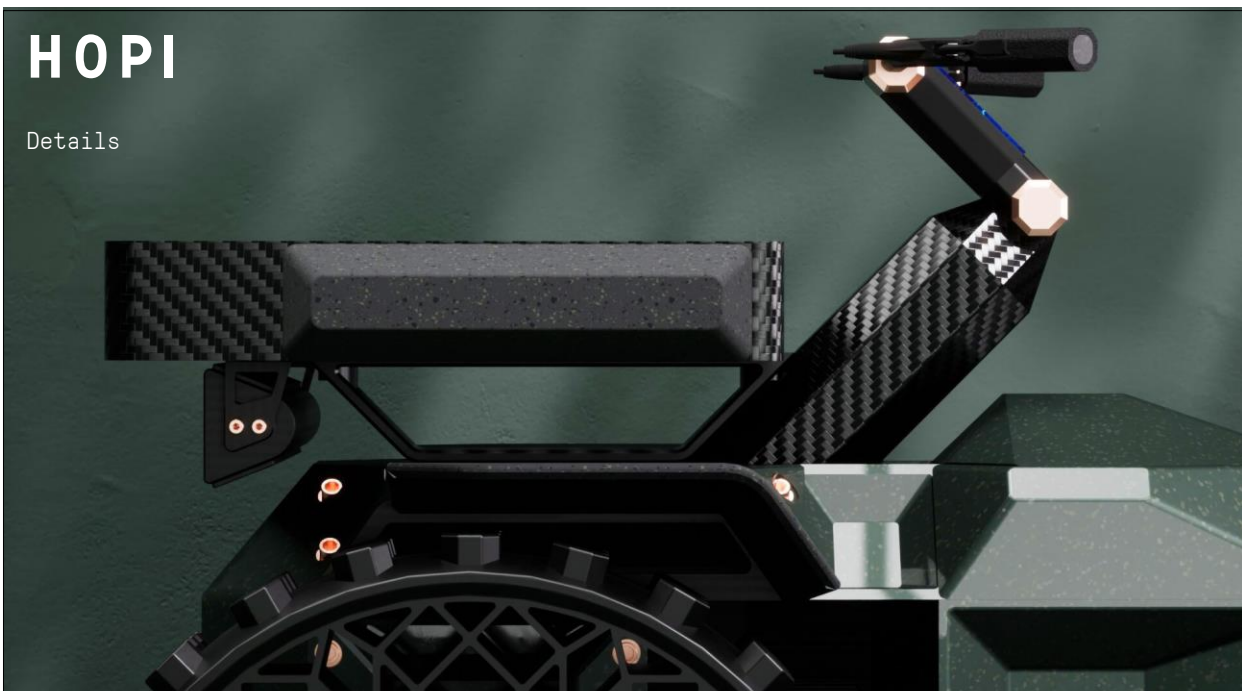
HOP1

Renders



HOP1

Details



HOP1



CAMPERS + RV'S

Vehicles Designed To Get People Outside

- Texino Atrium
- Texino Venture II
- HOPI ATV
- Bedouin EV

TEXINO ATRIUM

I previously served as Design Director at [Texino](#), a LA-based builder of thoughtful, innovative products intended to help get more people outside.

I oversaw Texino's daily design operations as well as its expansion into other emerging mobile service sectors: Box Campers, Mobile/Tiny Homes, Disaster Relief trailers, Medical Vans and Ghost Kitchens.

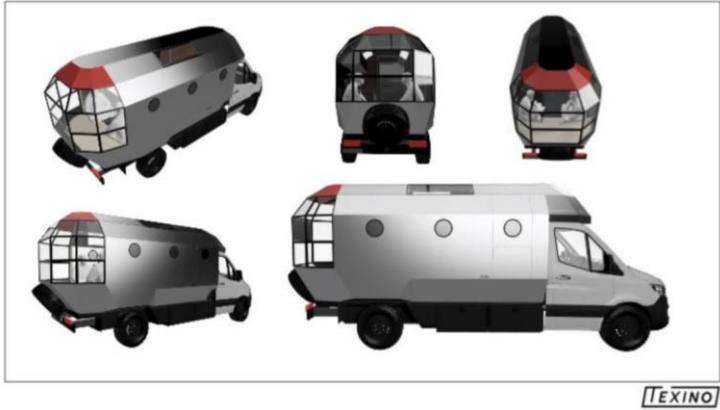


TEXINO ATRIUM

Inspired by comic adventure vehicles, the Atrium was a 3 month design/build exercise exploring a flagship box camper.

The design brief was simple: create a camper that provides the user both privacy and beautifully curated views in a space that feels more like an open air loft than a tin can.

More on project [here](#)



TEXINO ATRIUM

Design Inspiration: Stainless steel chalets + Submarine Interiors

KEY INSPIRATION



TEXINO

[NOT]BOX INTERIOR

SUBMARINE CHIC
MONOCHROME



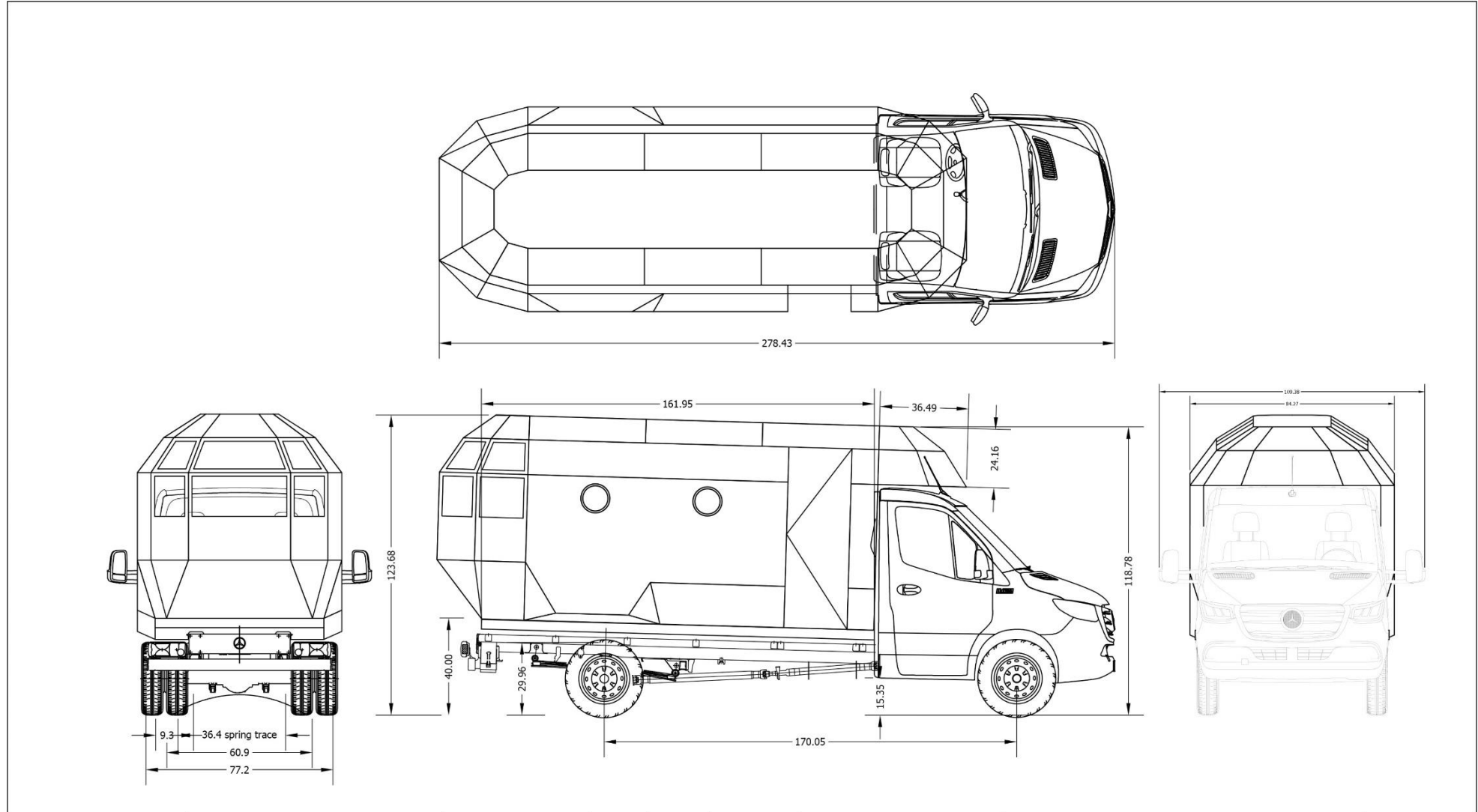
TEXINO ATRIUM

Design Development: Applying subtle surfacing/graphic breakups to diminish 'the brick' packaging



TEXINO ATRIUM

Package Diagram



TEXINO DESIGN DEPARTMENT
1440 N SPRING ST.
LOS ANGELES, CA 90012

UNLESS OTHERWISE SPECIFIED DIMENSIONS
ARE IN INCHES (IN)
TOLERANCES: 1 PLACE ± .1 2 PLACE ± .01
3 PLACE ± .005 4 PLACE ± .0050
ANGLES 30° FINISH 62 u IN

SAMPLE MUST BE APPROVED PRIOR PRODUCTION

DESIGN	G. WARTOFSKY	12/09/21	REV	DATE	PROJECT NO.	TITLE	SHEET NO.
DRAWN			<input type="checkbox"/>	PRELIMINARY	DWG NO.	BOX CAMPER	
CHECKED			<input type="checkbox"/>	REVISED & RESUBMIT	PROJECT		
APPROVED			<input type="checkbox"/>	FOR CONSTRUCTION	VAN MODEL	DO NOT SCALE DRAWING	SCALE
							SHEET

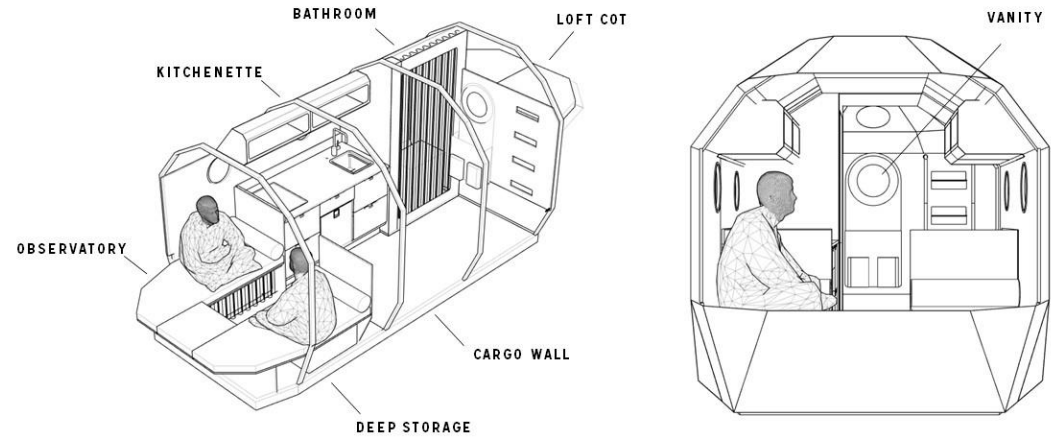
TEXINO ATRIUM

Renders



TEXINO ATRIUM

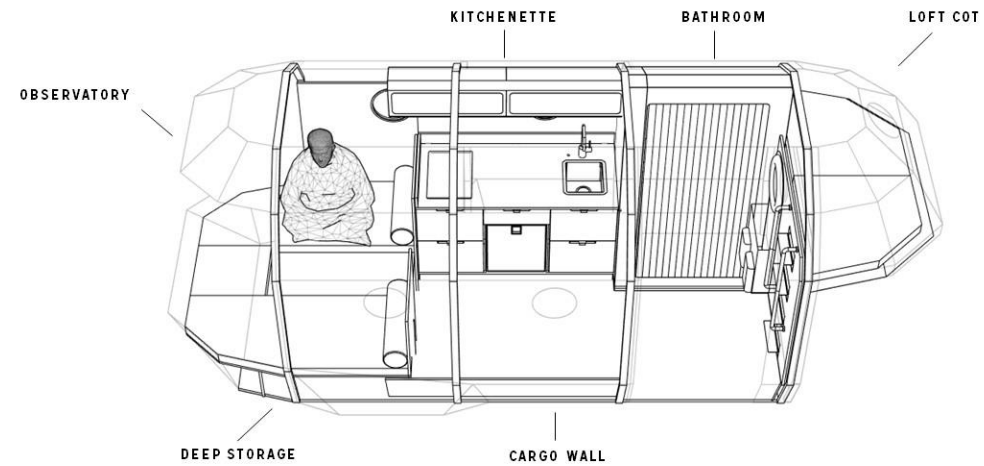
INTERIOR



TEXINO



INTERIOR

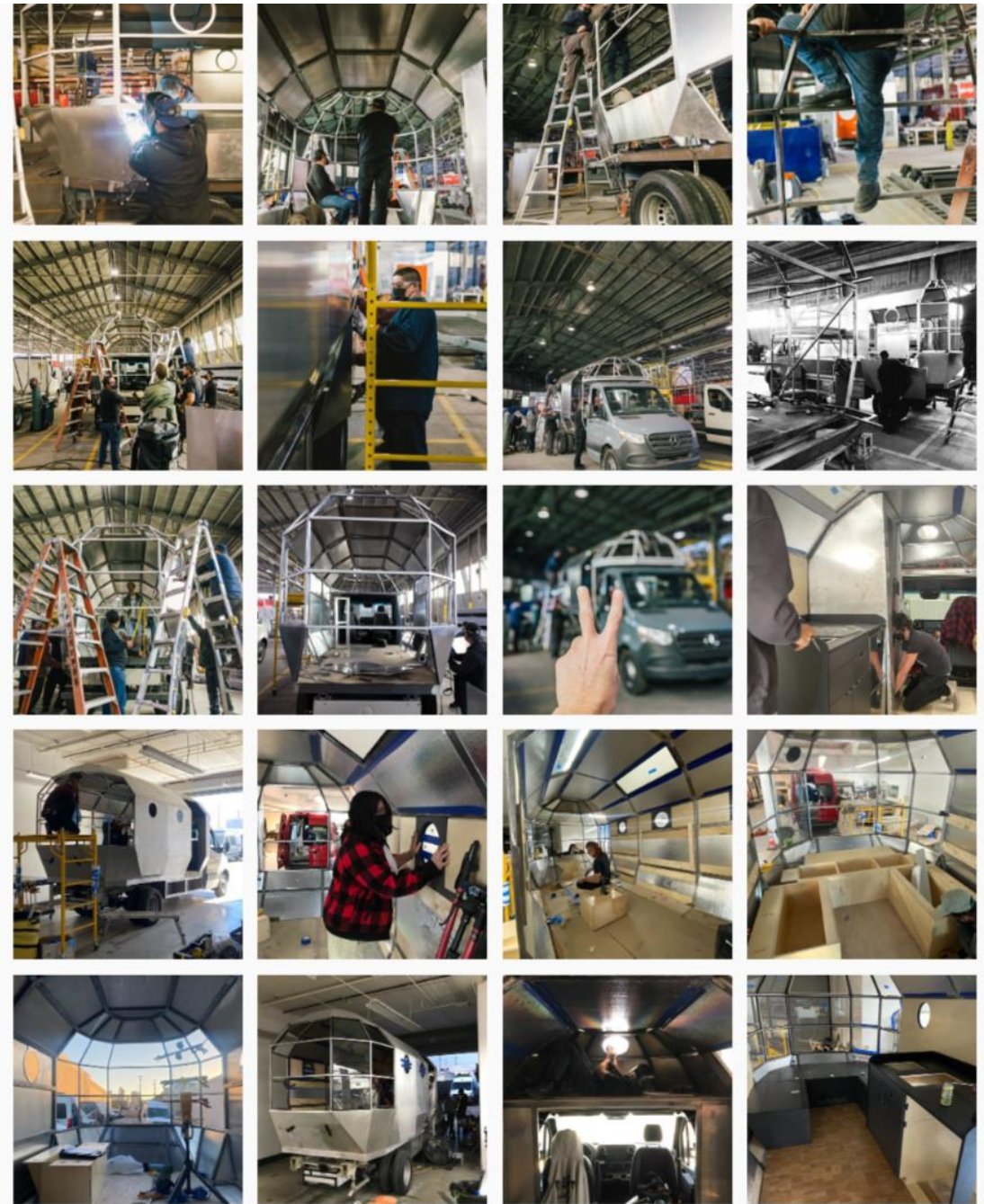
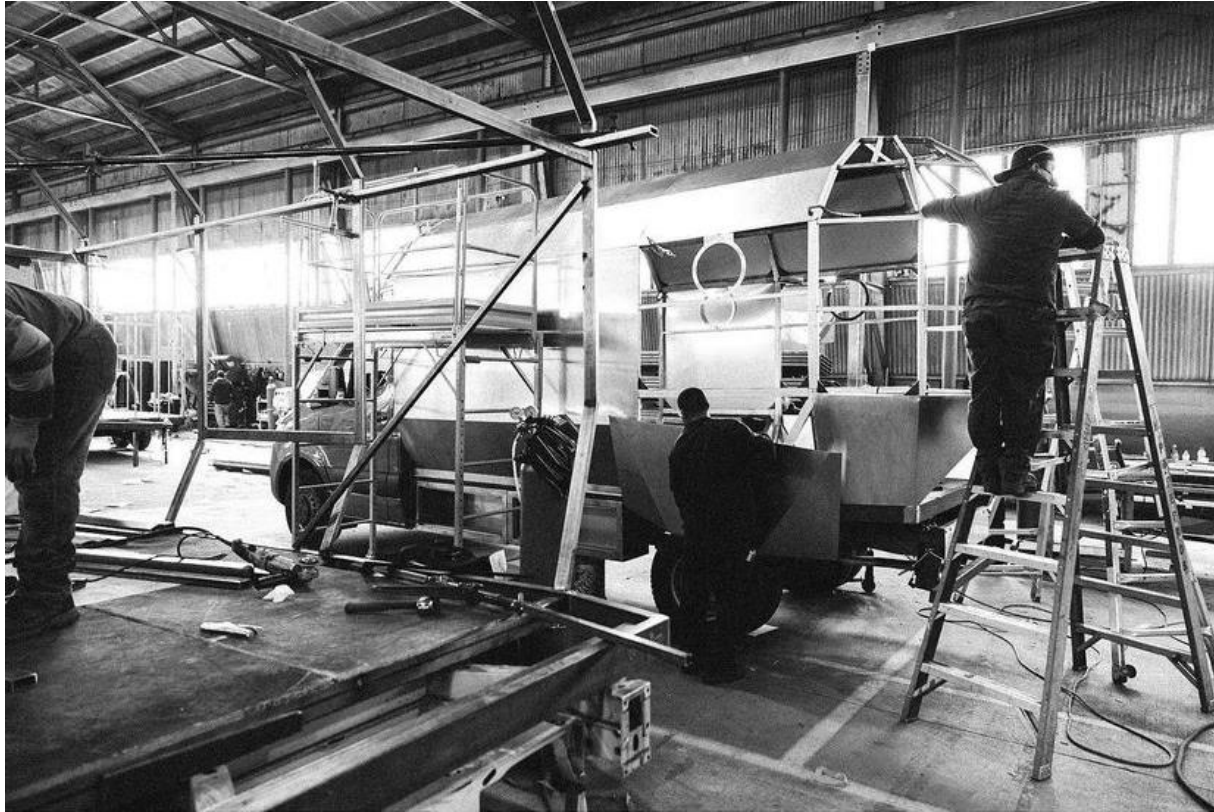


TEXINO



TEXINO ATRIUM

Prototype I + II Build Process:
Hand built proof-of concept box campers utilizing the Mercedes Sprinter flatbed platform



TEXINO ATRIUM

Press + Accolades

RR1

Robb Report

SUBSCRIBE

CARS YACHTS AVIATION WATCHES STYLE HOME FOOD & DRINK TRAVEL GIFT GUIDE

MOTORS / CARS

MARCH 29, 2022

A Van With a View? This New Camper Concept Has Better Windows Than Your Condo

Now you can take in your surroundings without every leaving your van.

By BRYAN HOOD

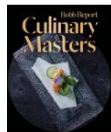


Texino

It's no secret that **camper vans** are now essentially traveling homes for the nomads among us. So, it was only a matter of time before someone gave a camper the ultimate home amenity: panoramic windows.

Los Angeles-based van maker Texino's Gabriel Wartofsky doesn't see any reason why your view should be limited while you drive cross country. Why not take it all in? That's why he came up with the Atrium, a van concept with windows that will make your city condo jealous.

JOIN TOP CULINARY ARTISANS



Sep. 28–Oct. 1: Indulge in incredible meals, expertly paired wines, and a luxury getaway in Jackson Hole this fall.

DINE WITH US

LATEST GALLERIES IN CARS



FERRARI The 1957 Ferrari 250 GT LWB Berlinetta Tour de France Zagato in Photos



The Texino Atrium Camper Van Prototype Is a Next-Level Fish Bowl

Don't worry, all that glass can be easily dimmed with the flick of a switch.

Monica Gonderman - Writer, Manufacturer - Photographer | Apr 4, 2022



Related Video



Trending Pages

2022 Porsche K1: The Driver's Electric SUV-Type Thing

Myth or Fact: Did Lamborghini Start Building Cars Because of a Ferrari Break?

Driving 60 Years of Lamborghini: History From the 400 GT to the Miura to the Countach and More

2023 Fisher Ocean First Drive: Drive Now, a Few Yearling Issues

Classic Controlling: We Drive Five Classic Toyota Land Cruisers



Texino founder and CEO Nick Devane describes the Atrium adventure as "a deep study in departures" — an insightfully mysterious and fitting outlook on a futuristic, out-of-this-world project. Texino's current lineup includes a Mercedes-Benz Sprinter camper van conversion fleet consisting of rental and for-purchase pop-top tent and hard-top models—the Switchback, Venture, and Outpost—that look like traditional camper vans.

The new Atrium model, on the other hand, more resembles a space vessel, a moon machine made of unobtainium. The Atrium prototype is built on a Mercedes-Benz Sprinter foundation, retaining the Sprinter's nose and cockpit. It ditched its traditional Sprinter body in favor of an Airstream-like capsule that extends over the roof of the cab.



The whole design is eye-catching, of course, but its geometric, atrium-like rear, from which the model receives its name, is arguably the focal point. The whole upper-rear quarter is fully glassed-in, providing an observatory-rivalling scenic view while allowing for plentiful natural light. It's truly like an atrium—in this case, a large, window-covered space surrounded by a camper van. We'd love to experience a good storm from inside the Atrium.

HICONSUMPTION

||| MENU

LIVING /

Gabriel Wartofsky's Concept for the Texino Atrium Favors Form and Function



WARTOFSKY

BY BRYAN HOOD

PHOTOGRAPH BY MONICA GONDERMAN

PHOTOGRAPH BY MONICA GONDERMAN

PHOTOGRAPH BY MONICA GONDERMAN

PHOTOGRAPH BY MONICA GONDERMAN

PHOTOGRAPH BY MONICA GONDERMAN

PHOTOGRAPH BY MONICA GONDERMAN

PHOTOGRAPH BY MONICA GONDERMAN

PHOTOGRAPH BY MONICA GONDERMAN

PHOTOGRAPH BY MONICA GONDERMAN

PHOTOGRAPH BY MONICA GONDERMAN

PHOTOGRAPH BY MONICA GONDERMAN

PHOTOGRAPH BY MONICA GONDERMAN

PHOTOGRAPH BY MONICA GONDERMAN

PHOTOGRAPH BY MONICA GONDERMAN

PHOTOGRAPH BY MONICA GONDERMAN

PHOTOGRAPH BY MONICA GONDERMAN

PHOTOGRAPH BY MONICA GONDERMAN

PHOTOGRAPH BY MONICA GONDERMAN

PHOTOGRAPH BY MONICA GONDERMAN

PHOTOGRAPH BY MONICA GONDERMAN

PHOTOGRAPH BY MONICA GONDERMAN

PHOTOGRAPH BY MONICA GONDERMAN

PHOTOGRAPH BY MONICA GONDERMAN

PHOTOGRAPH BY MONICA GONDERMAN

PHOTOGRAPH BY MONICA GONDERMAN

PHOTOGRAPH BY MONICA GONDERMAN

PHOTOGRAPH BY MONICA GONDERMAN

PHOTOGRAPH BY MONICA GONDERMAN

PHOTOGRAPH BY MONICA GONDERMAN

PHOTOGRAPH BY MONICA GONDERMAN

PHOTOGRAPH BY MONICA GONDERMAN

PHOTOGRAPH BY MONICA GONDERMAN

PHOTOGRAPH BY MONICA GONDERMAN

PHOTOGRAPH BY MONICA GONDERMAN

PHOTOGRAPH BY MONICA GONDERMAN

PHOTOGRAPH BY MONICA GONDERMAN

PHOTOGRAPH BY MONICA GONDERMAN

PHOTOGRAPH BY MONICA GONDERMAN

PHOTOGRAPH BY MONICA GONDERMAN

PHOTOGRAPH BY MONICA GONDERMAN

PHOTOGRAPH BY MONICA GONDERMAN

PHOTOGRAPH BY MONICA GONDERMAN

PHOTOGRAPH BY MONICA GONDERMAN

PHOTOGRAPH BY MONICA GONDERMAN

PHOTOGRAPH BY MONICA GONDERMAN

PHOTOGRAPH BY MONICA GONDERMAN

PHOTOGRAPH BY MONICA GONDERMAN

PHOTOGRAPH BY MONICA GONDERMAN

PHOTOGRAPH BY MONICA GONDERMAN

PHOTOGRAPH BY MONICA GONDERMAN

PHOTOGRAPH BY MONICA GONDERMAN

PHOTOGRAPH BY MONICA GONDERMAN

PHOTOGRAPH BY MONICA GONDERMAN

PHOTOGRAPH BY MONICA GONDERMAN

PHOTOGRAPH BY MONICA GONDERMAN

PHOTOGRAPH BY MONICA GONDERMAN

PHOTOGRAPH BY MONICA GONDERMAN

PHOTOGRAPH BY MONICA GONDERMAN

PHOTOGRAPH BY MONICA GONDERMAN

PHOTOGRAPH BY MONICA GONDERMAN

PHOTOGRAPH BY MONICA GONDERMAN

PHOTOGRAPH BY MONICA GONDERMAN

PHOTOGRAPH BY MONICA GONDERMAN

PHOTOGRAPH BY MONICA GONDERMAN

PHOTOGRAPH BY MONICA GONDERMAN

PHOTOGRAPH BY MONICA GONDERMAN

PHOTOGRAPH BY MONICA GONDERMAN

FROM THE SHOP

TEXINO VENTURE II CAMPER

The venture II is a reboot of the original texino classic camper: designed for people who love people.

It marks the brands return to a camper with a proper social layout- prioritizing back to basics chill space to gear storage.



TEXINO VENTURE II CAMPER

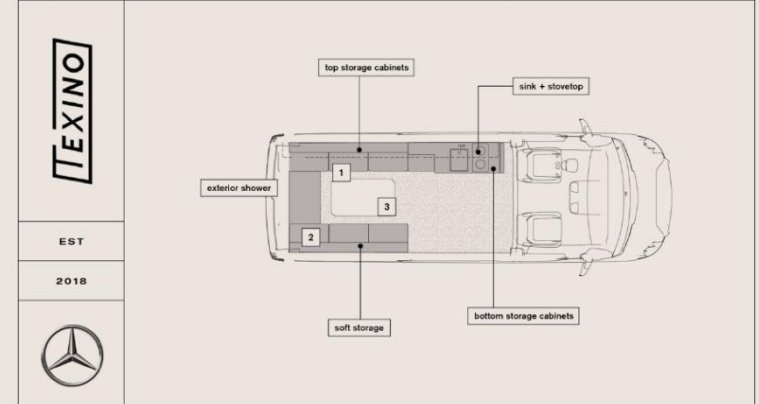
As Design Director at Texino, my team was tasked with redesigning Texino's Classic model- one built for people who love people.

It's a return to a social layout- prioritizing back to basics chill space over storage.

More on project [here](#)



1 Seating 2 Bed 3 Dinette



EST
2018




The Venture

<p>C Sleeps 2</p> <p>⚙️ 144in. wheelbase</p>	<p>S</p>
<p>👤 Seats 2</p> <p>⚡ 230 watts of solar charging power</p>	
<p>💧 22 gallon water tanks</p> <p>🔋 2 x 100ah lithium battery</p>	

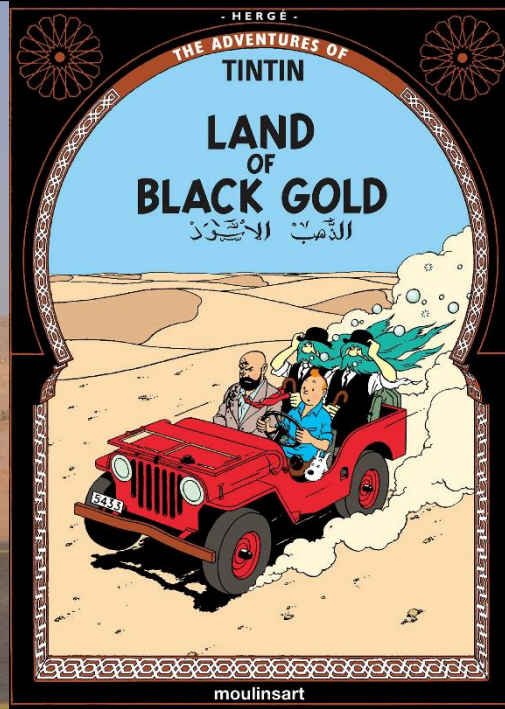
BEDOUIN EV

The 20th Century Camel
An All-terrain Vehicle Designed for Adventure Travel.



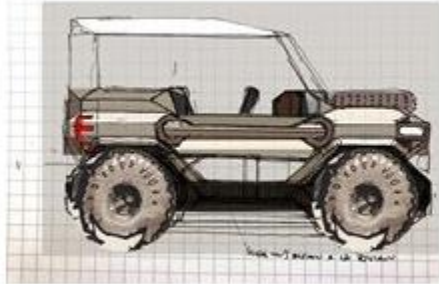
BEDOUIN EV

Design Inspiration: Saharan Adventure + Camel Trophy



BEDOUIIN

Design Development





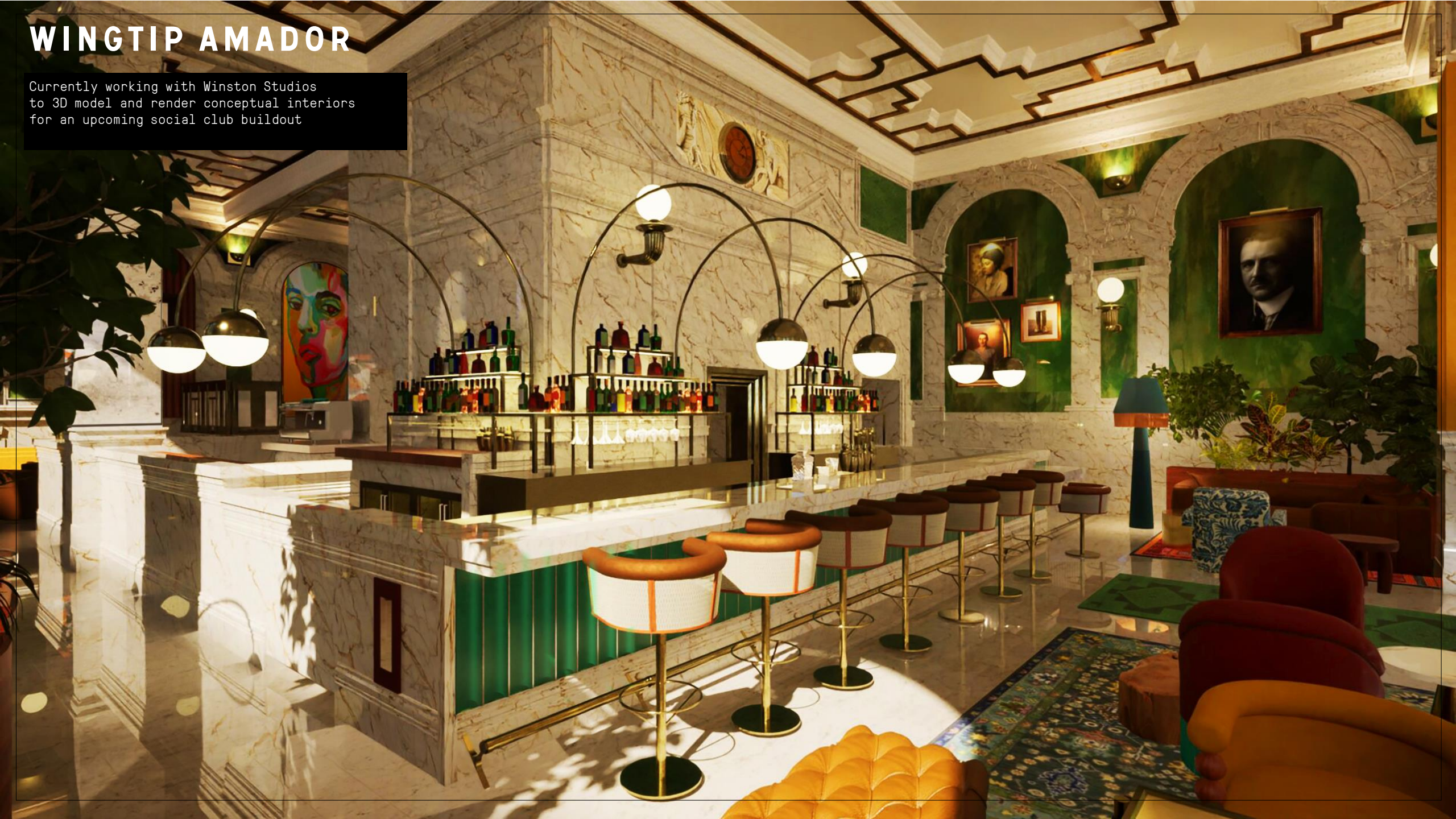
BRANDED/INTIMATE SPACES

Themed Oasis

- Wingtip Amador
- Greenhouse
- Acura Autonomy 2040
- Bloom + Plume Cafe
- Poke Backpack

WINGTIP AMADOR

Currently working with Winston Studios to 3D model and render conceptual interiors for an upcoming social club buildout



WINGTIP AMADOR



GREENHOUSE

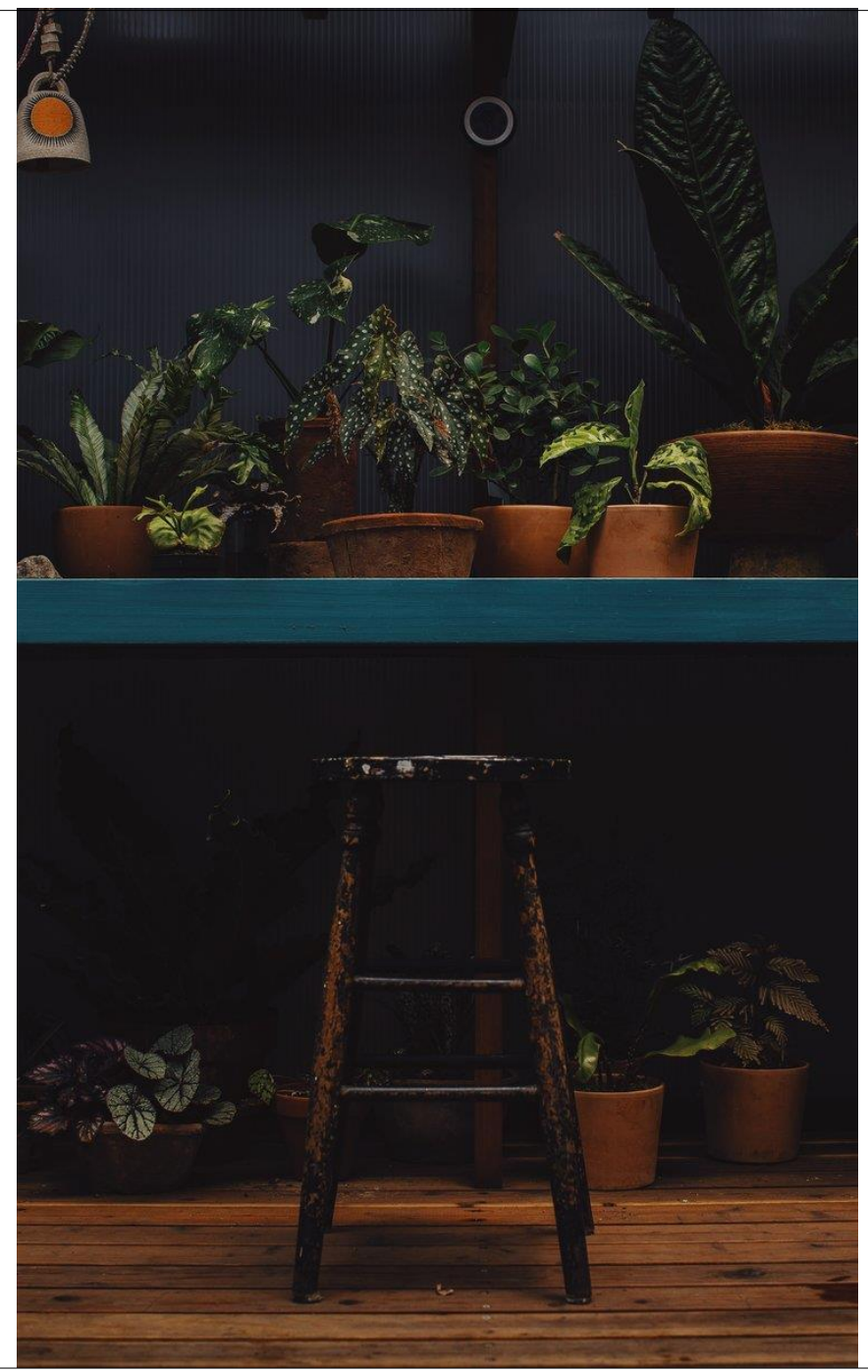
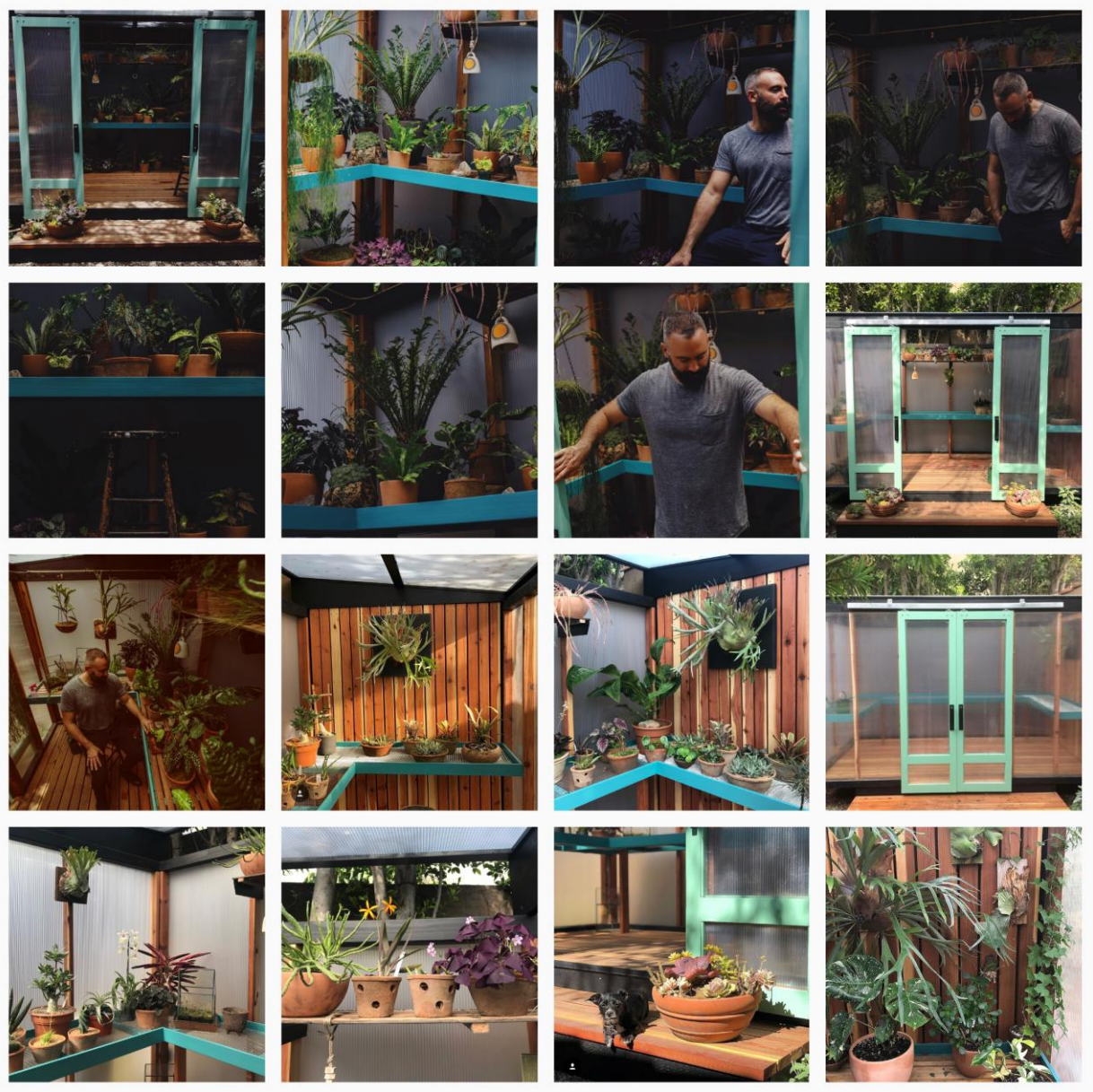
A private greenhouse sanctuary designed to reconnect visitors to the restorative power of nature, meditation, gratitude and contemplation.

I designed/drafted the greenhouse, and worked with a contractor on fabrication/build.

More on project [here](#)

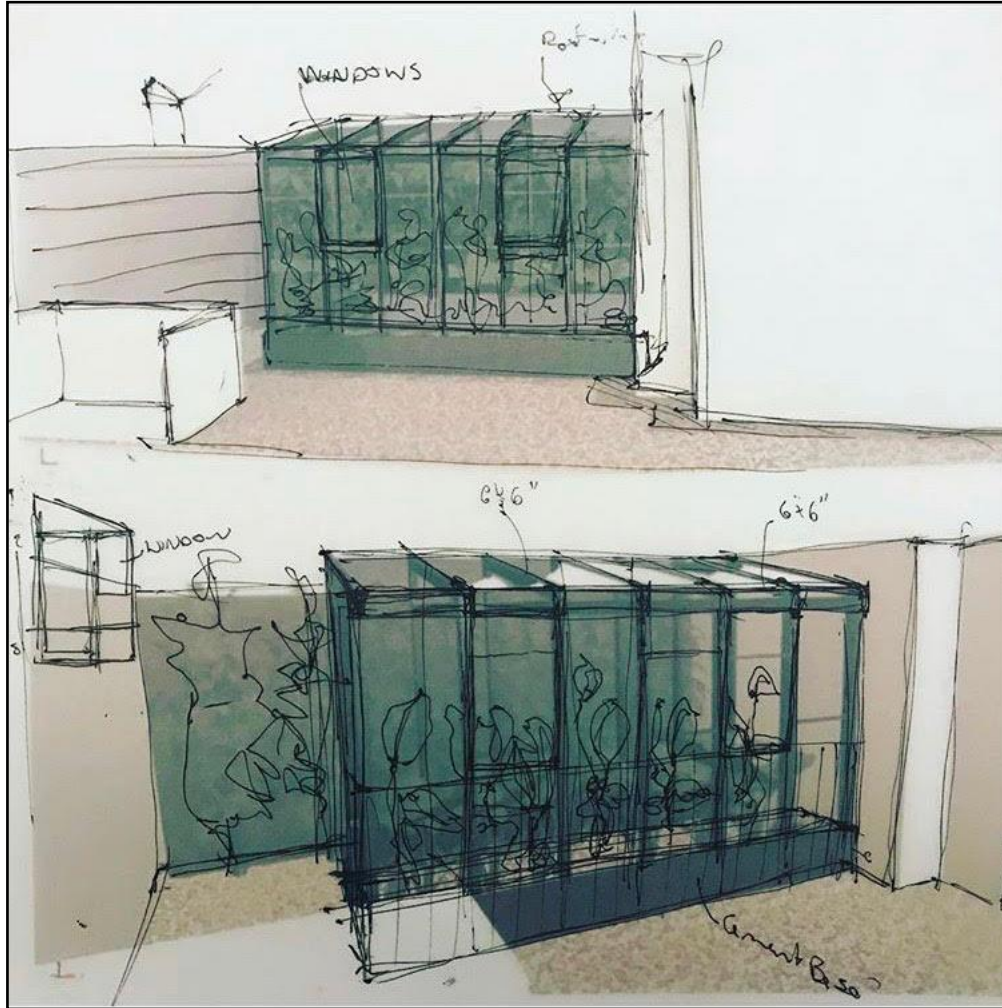


GREENHOUSE



GREENHOUSE

Preliminary concept sketches

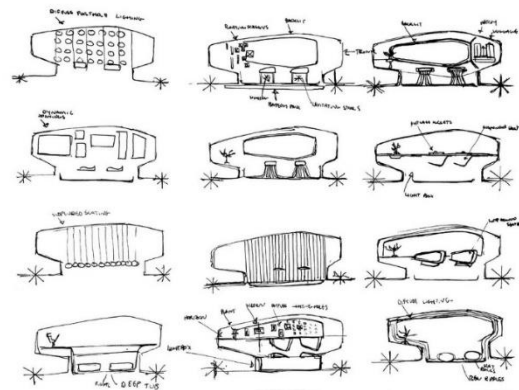
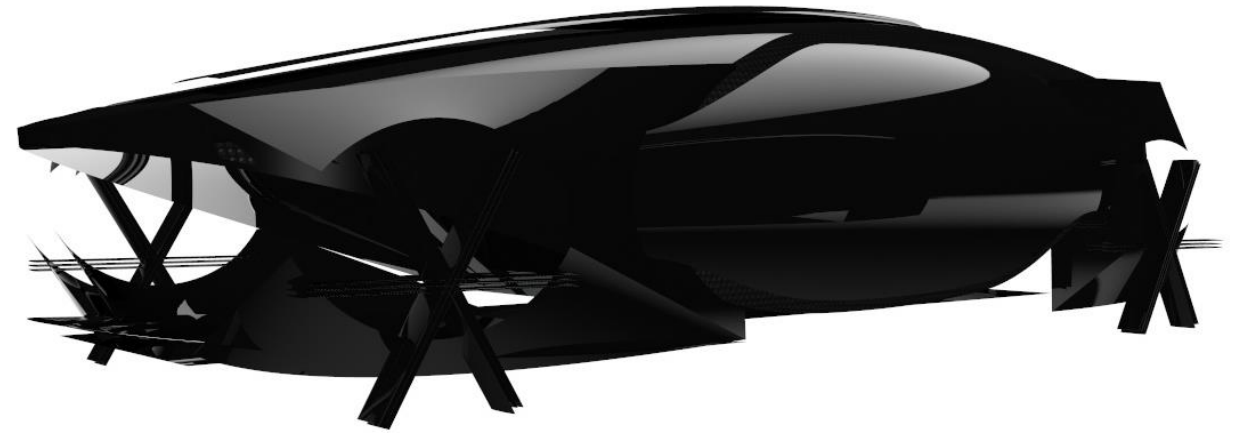
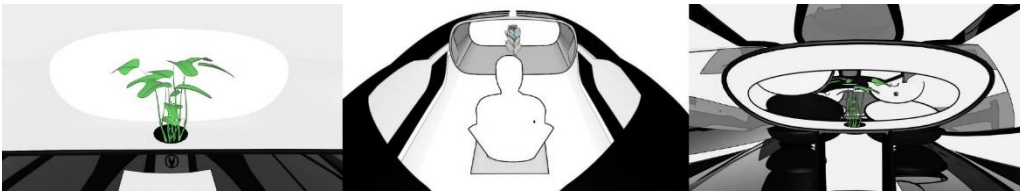


ACURA AUTONOMY 2040

Consulted with Honda Advanced Design in 2014 to envision an autonomous luxury passenger experience for the year 2040.

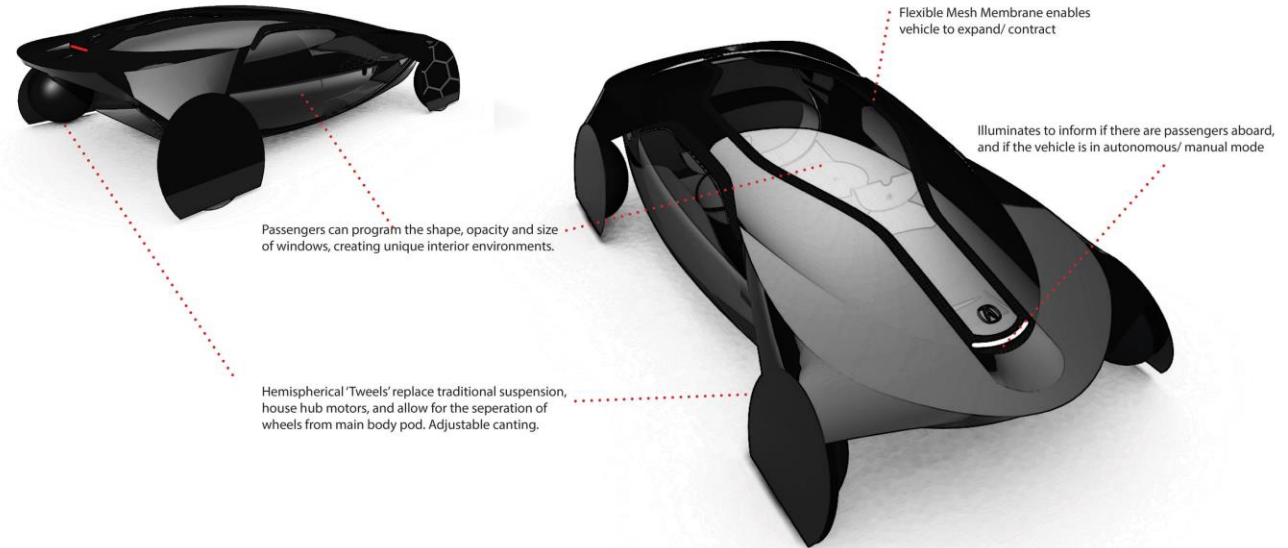
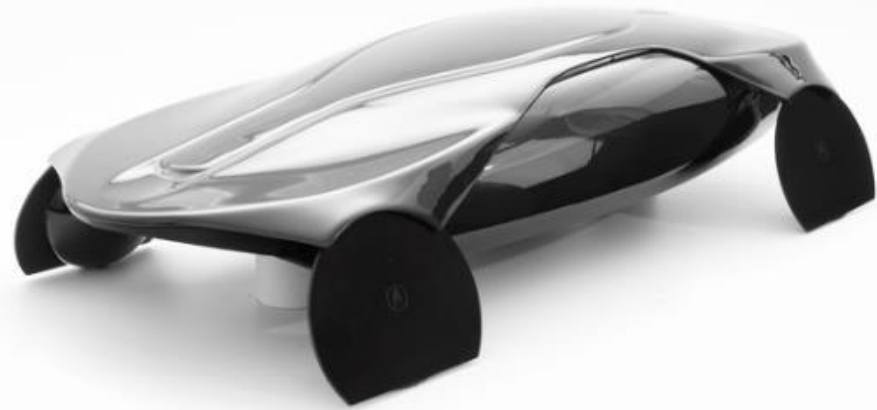
Autonomy 2040 builds a future steeped in ritual traditions of craft, ceremony and contemplation.

Click [here](#) for more on multimedia/fabricated physical project deliverables.



AUTONOMY 2040

A conceptual branded autonomous luxury passenger experience for the year 2040 that combines emerging innovation with timeless rituals.



5th Scale physical model + Digital Model

BLOOM AND PLUME CAFE

Dance Theater, Studio Workshop: A flexible, adaptable & distinctly Bloom and Plume multi-use outdoor space incorporating a green space, cafe, showroom, recording studio and dance floor. Inspired by the founder, Maurice's life, as well as my own childhood growing up in a house where my mother ran a dance studio, and my father a painting workshop.

More on project [here](#)



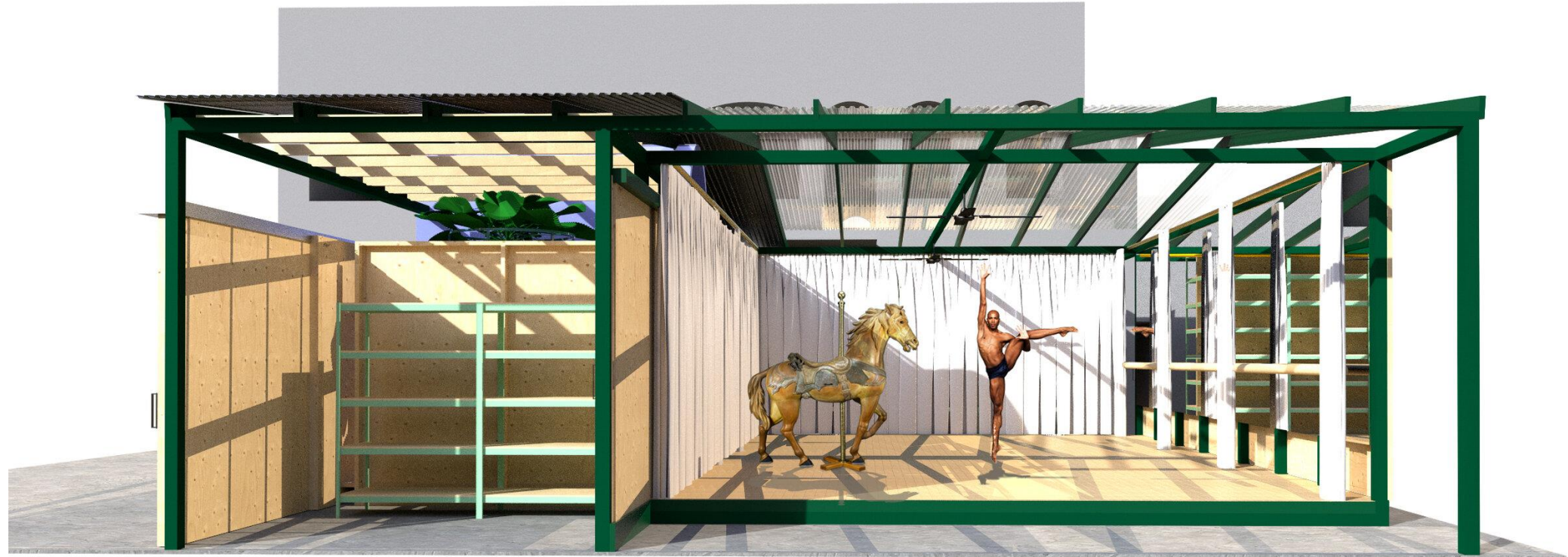
DESIGN ELEMENTS



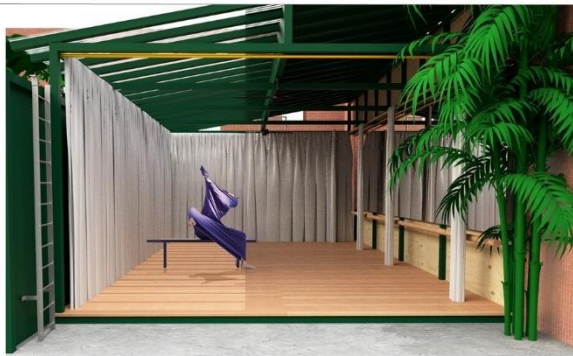
Provides a boundary of street protection, solace and sound-deadening AND.. That feminine vibe..

- 'Sound Buffer' Gate way
- Feminine
- Simple
- Joy in Repetition
- Consistent with B + P Form Language

BLOOM AND PLUME CAFE



DANCE STUDIO MODE



PRODUCTION MODE

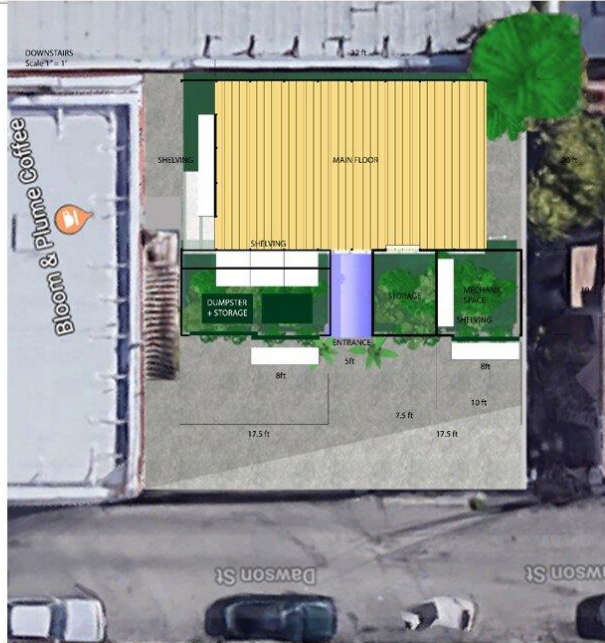
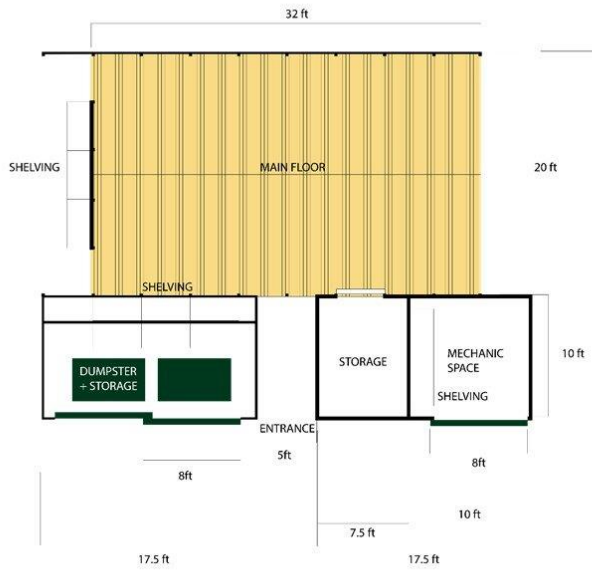


MULTI-USE MODES: WORKSHOP MODE



BLOOM AND PLUME CAFE

PLAN VIEW: MULTI-USE SHADED DECK + 2 STORAGE STRUCTURES



SHELVING UNITS



GABRIEL WARTOFSKY DESIGN

STORAGE UNITS



SLIDING BARN DOORS
(SOME HIDDEN FOR THIS ILLUSTRATION)

MECHANICS' SHED INTERIOR
- MODIFIABLE FOR B&P STORAGE

GABRIEL WARTOFSKY DESIGN

POKE BACKPACK

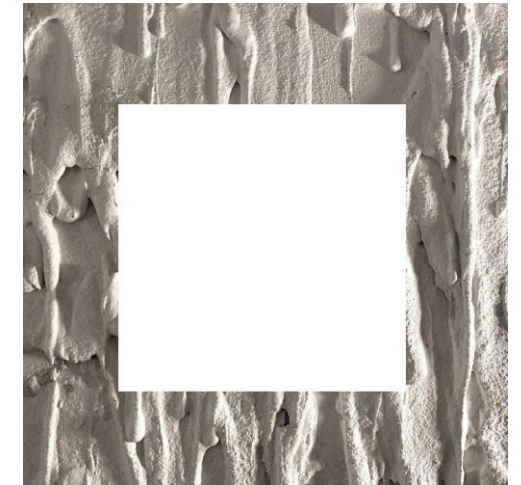
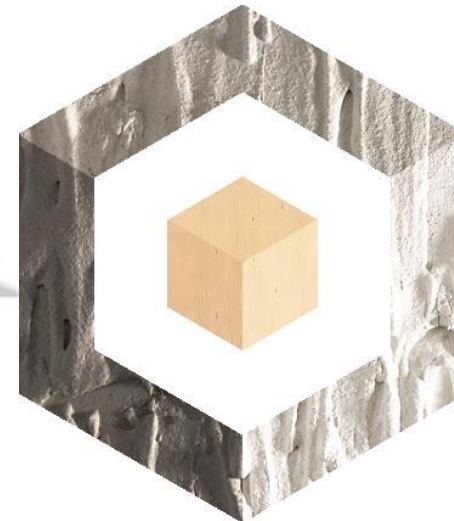
A mobile healing unit designed to extend POKE's capabilities beyond the obstacles of geography and COVID.



COVID has redefined our access to self-care. With POKE's closure during the pandemic, this design exercise explores ways in which to preserve services in a post-pandemic world.

INSPIRED BY:

POKE's signature Cake Plaster
The healing power of wanderlust
Mobile services (expanding POKE to the desert?)
Adaptation of services in response to COVID
Pop-up children's adventure books
Backpack, the dog

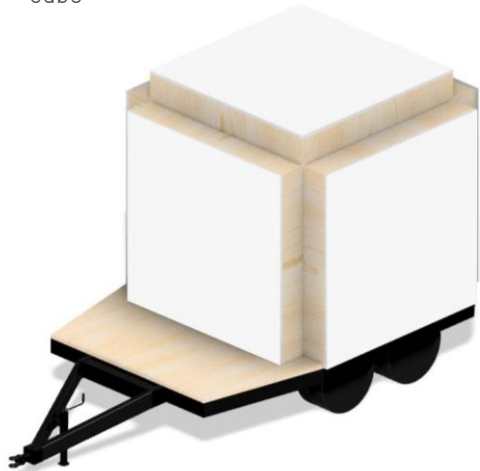


POKE BACKPACK



CLOSED

10' x 10' expandable
cube

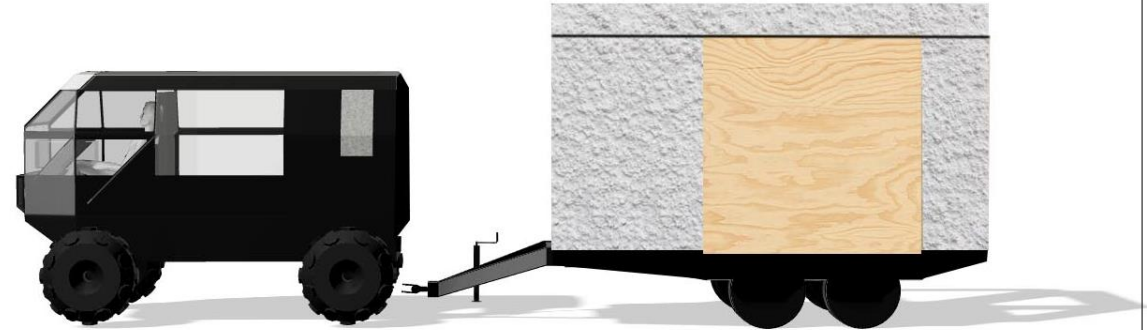
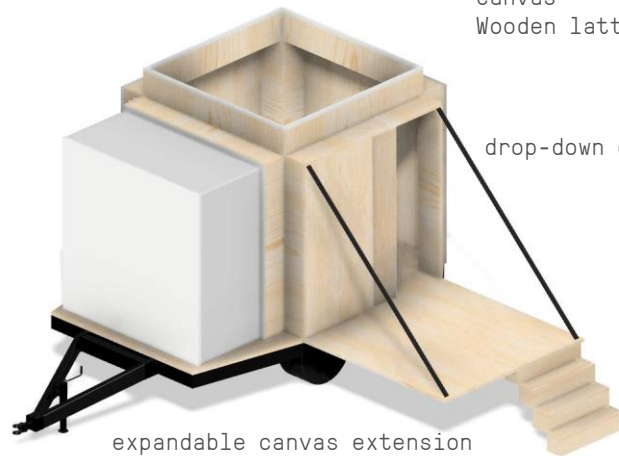


OPEN

roof:
translucent
retractable
canvas
Wooden lattice

drop-down entrance

expandable canvas extension



TINY HOMES

Efficient Micro-living

- Texino Tiny Home
- Floating Home
- Hypercube

TEXINO TINY HOME

Design Brief + Development

A design/build proposal envisioning a Texino Tiny Home designed for vacation rental/hospitality applications

Designed in collaboration with Ouida Biddle.

Design Criteria

- Mobile/Trailer Mounted
- Built to \$100,000 Price



TEXINO

UNIQUE FEATURES

OUTDOOR MUDROOM/SHOWER - FOR KEEPING INTERIOR CLEAN
(SHOWER CURTAIN CAN PROVIDE A PUNCH OF COLOR/PATTERN)

DRAWBRIDGE DECK- LOUNGE + AREA + ENHANCED SECURITY

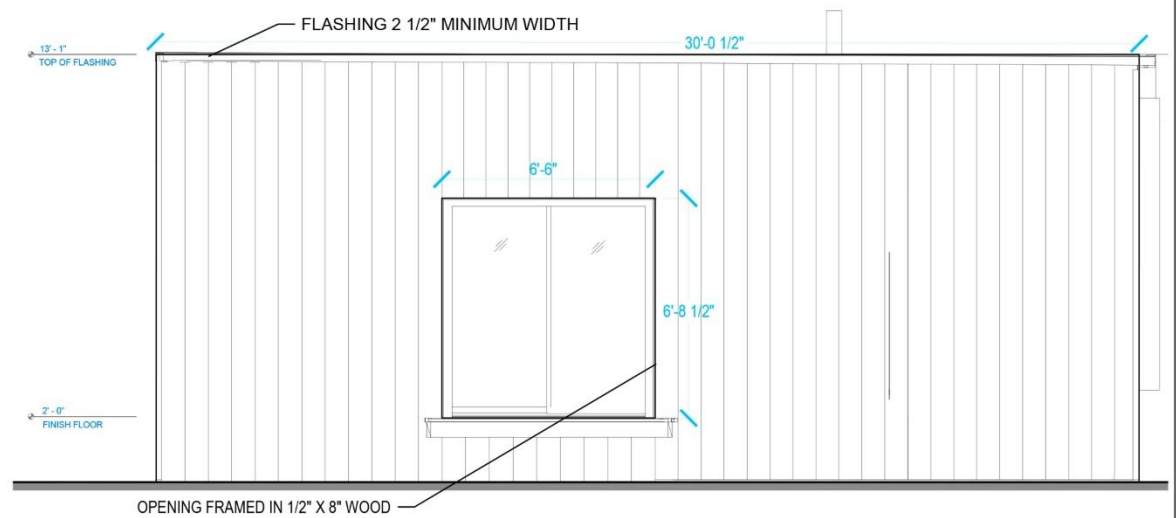
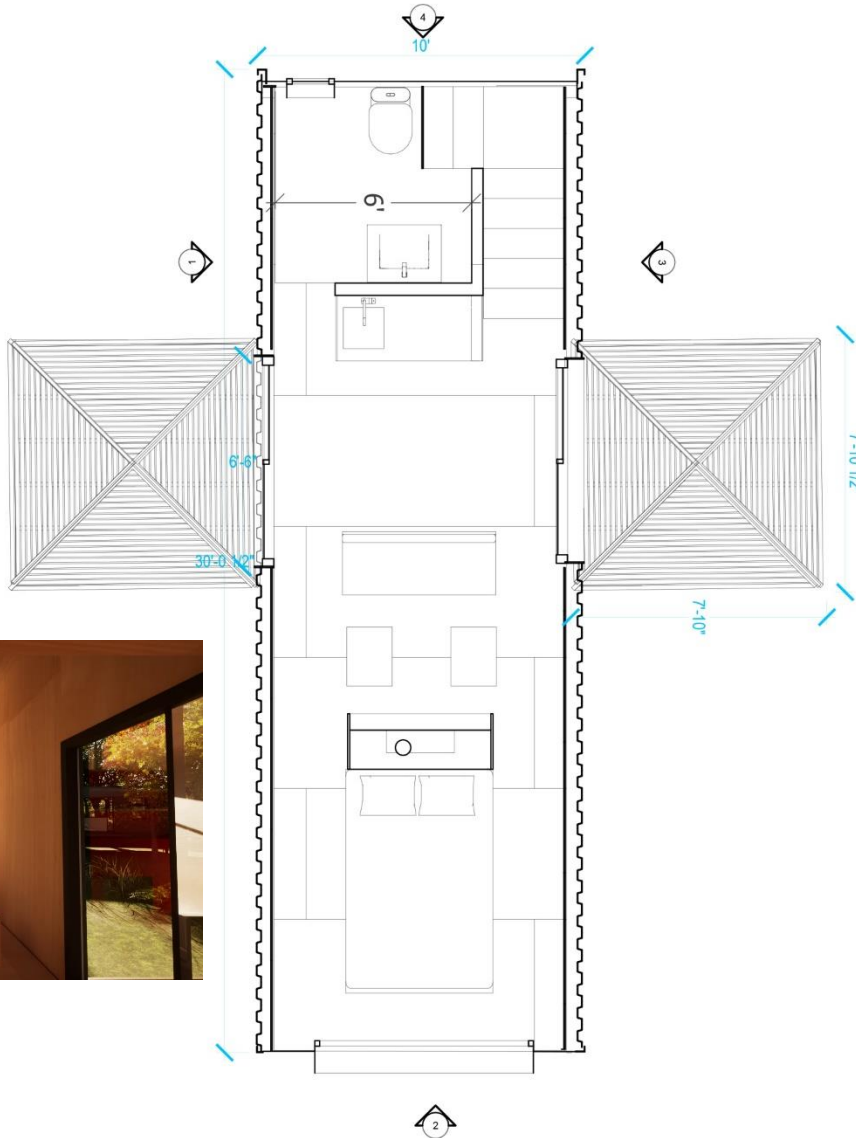
LOFT SKYLIGHTS- FOR STAR GAZING IN BOTH BEDS



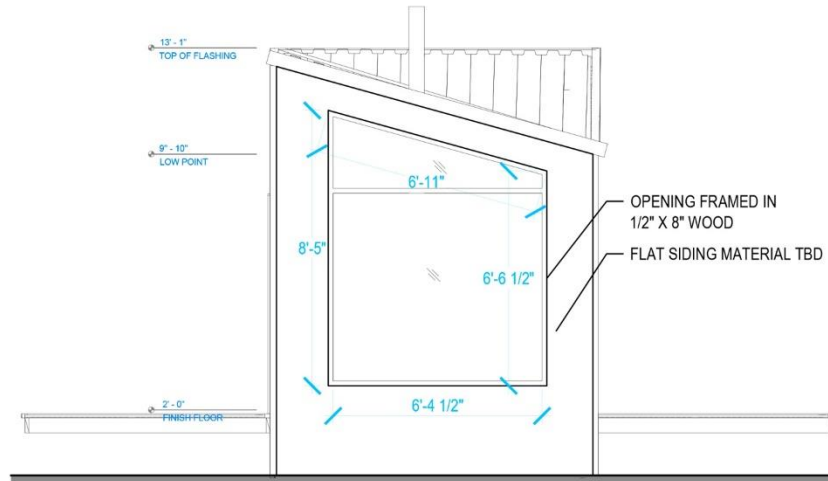
MATERIALITY

METALLIC SHELL MEETS MINIMALIST INTERIOR





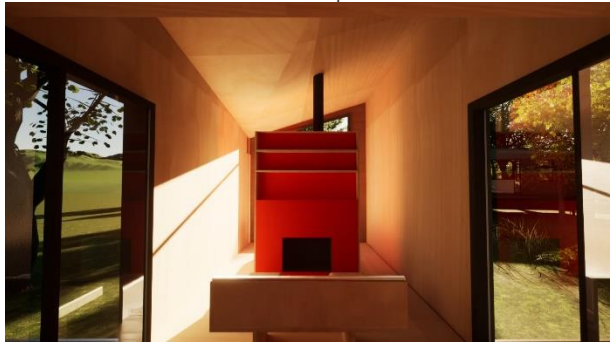
ELEVATION I



ELEVATION 2

TAKEOFFS

ELEVATION 1	
CORRUGATED METAL	352 SF
FLASHING	30 LF
STOREFRONT	43 SF
WOOD WINDOW FRAME	27 LF
ELEVATION 2	
FLAT SIDING	52 SF
FLASHING	10 LF
STOREFRONT	50 SF
WOOD WINDOW FRAME	28 LF
PLAN	
OSB SUBFLOOR	300 SF
WOOD 1 FINISH FLOOR	265 SF
TILE	36 SF
EXT WOOD DECK	
WOOD 2	350 LF
WOOD 3	48 LF



TEXINO DESIGN DEPARTMENT
1440 N SPRING ST.
LOS ANGELES, CA 90012

UNLESS OTHERWISE SPECIFIED DIMENSIONS ARE IN INCHES (IN)
TOLERANCES: 1 PLACE ± .1 2 PLACE ± .01
3 PLACE ± .005 4 PLACE ± .0050
ANGLES 30° FINISH 62 u IN

SAMPLE MUST BE APPROVED PRIOR PRODUCTION

DESIGN TEXINO
DRAWN
CHECKED
APPROVED

REV DATE 03/02/22
 PRELIMINARY
 REVISED & RESUBMIT
 FOR CONSTRUCTION

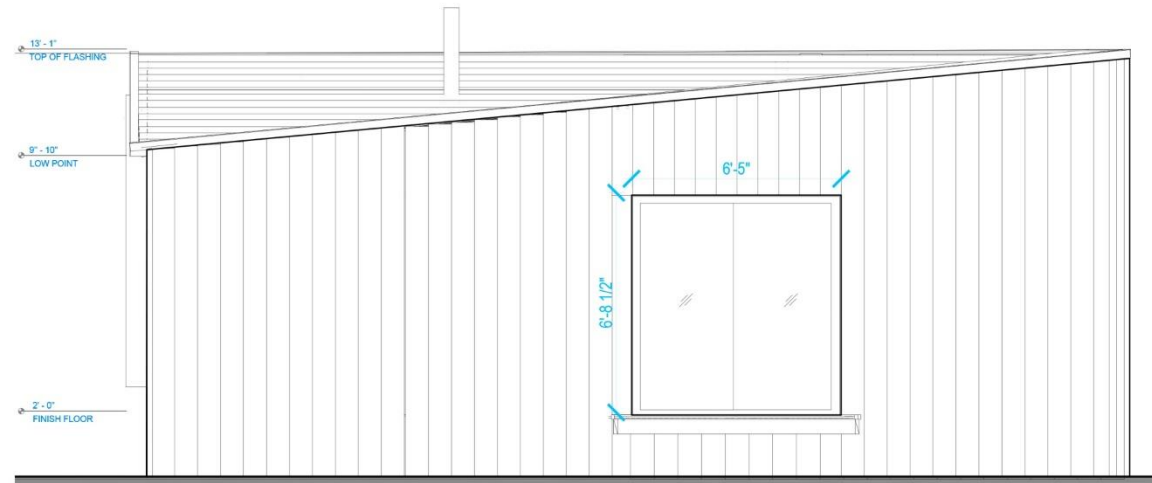
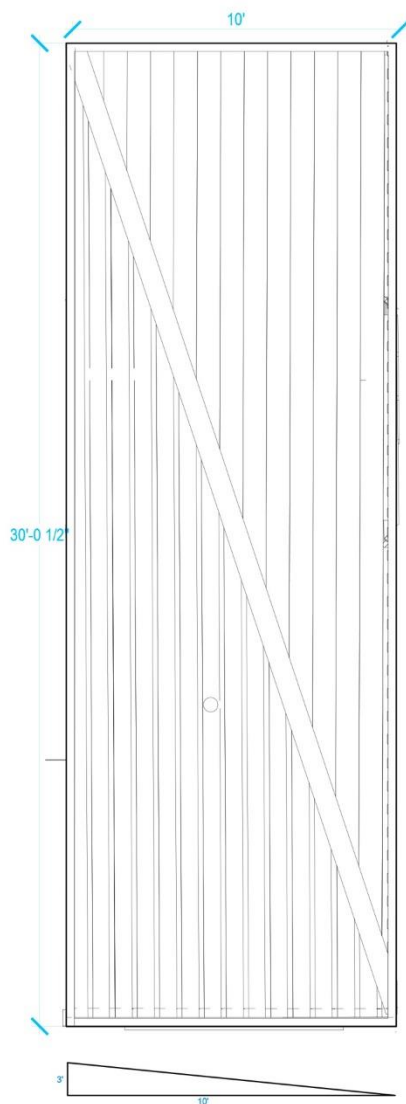
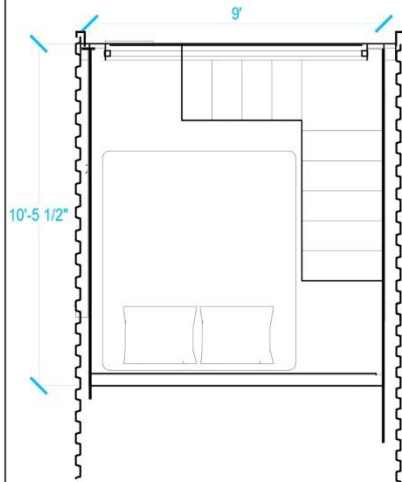
PROJECT NO.
DWG NO.
PROJECT
VAN MODEL

TITLE
PARK MODEL TRAILER
X

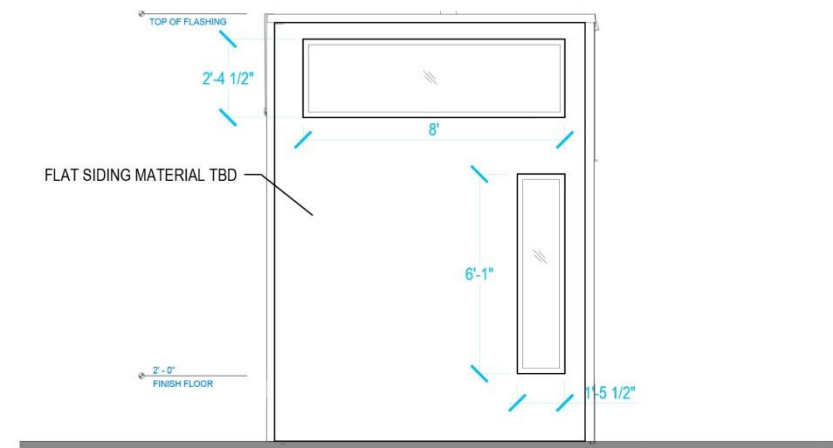
DO NOT SCALE DRAWING

SCALE -

SHEET NO.
1.00
SHEET



ELEVATION 3



ELEVATION 4

TAKEOFFS

ELEVATION 3	
CORRUGATED METAL	300 SF
FLASHING	30 LF
STOREFRONT	43 SF
WOOD WINDOW FRAME	27 LF

ELEVATION 4	
FLAT SIDING	94 SF
FLASHING	10 LF
STOREFRONT	28 SF
WOOD WINDOW FRAME	28 LF

LOFT PLAN	
OSB SUBFLOOR	67 SF
WOOD I FINISH EXCLUDES WALLS AND STAIRS	67 SF

ROOF PLAN	
CORRUGATED METAL	300 SF
FLASHING	160 LF



TEXINO DESIGN DEPARTMENT
1440 N SPRING ST.
LOS ANGELES, CA 90012

UNLESS OTHERWISE SPECIFIED DIMENSIONS ARE IN INCHES (IN)
TOLERANCES: 1 PLACE ± .1 2 PLACE ± .01
3 PLACE ± .005 4 PLACE ± .0050
ANGLES 30° FINISH 62 u IN

SAMPLE MUST BE APPROVED PRIOR PRODUCTION

DESIGN TEXINO
DRAWN
CHECKED
APPROVED

REV DATE 03/02/22
 PRELIMINARY
 REVISED & RESUBMIT
 FOR CONSTRUCTION

PROJECT NO.
DWG NO.
PROJECT
VAN MODEL

TITLE
PARK MODEL TRAILER
X
DO NOT SCALE DRAWING SCALE -

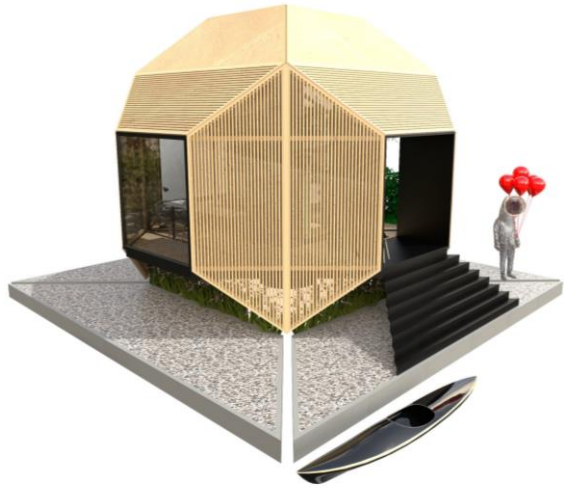
SHEET NO.
2.00
SHEET 2 of 2



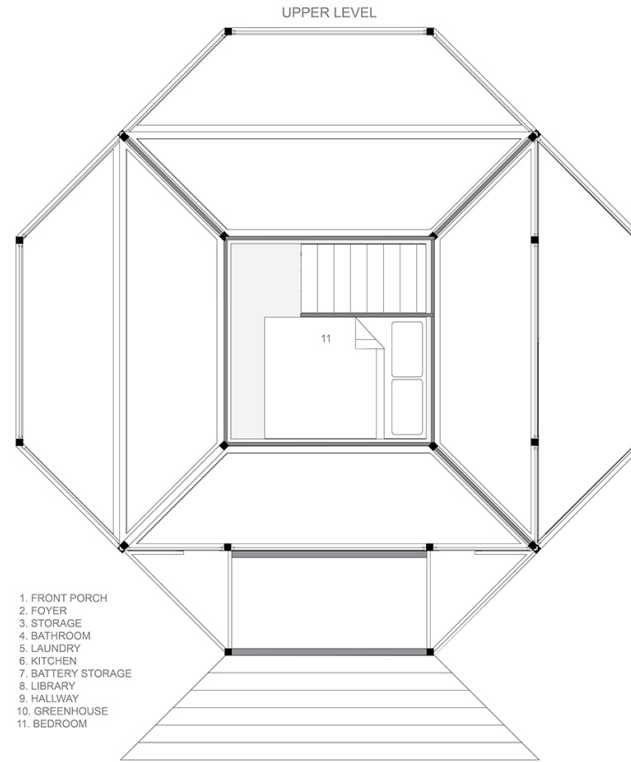
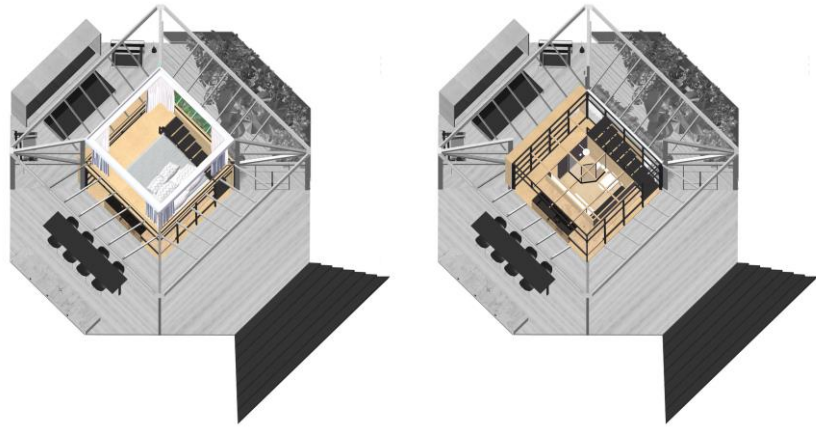
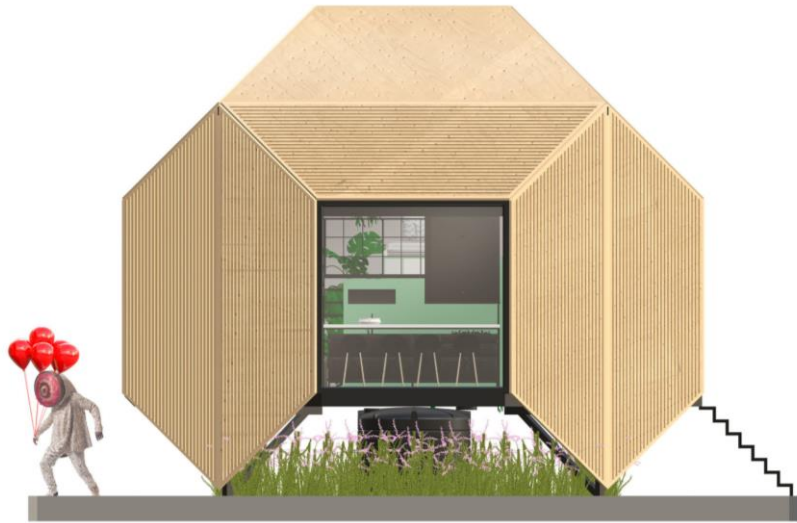
FLOATING HOME

The Hypercube is a pre-fab, autonomous floating home designed to both address the housing needs of communities affected by rising sea levels, and to reconnect dwellers to the natural systems that sustain them.

More on project [here](#)



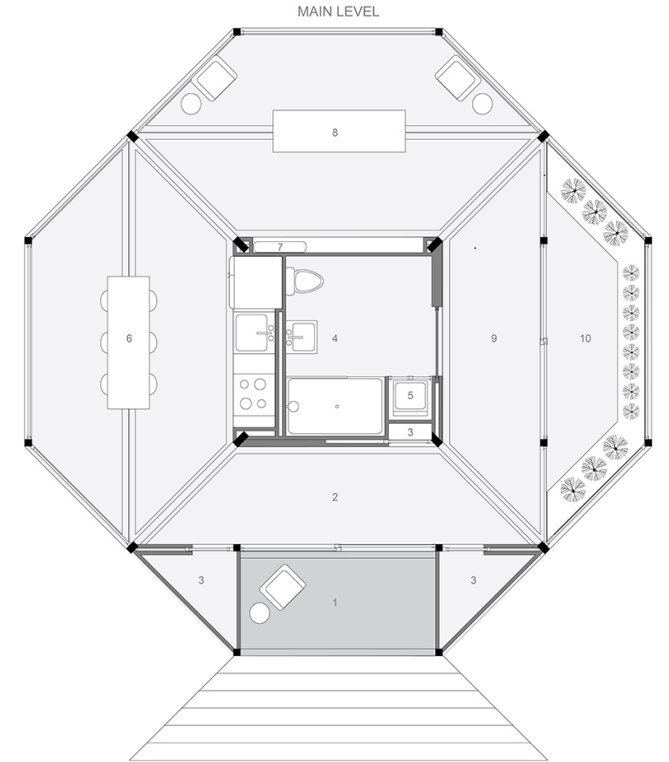
FLOATING HOME



- 1. FRONT PORCH
- 2. FOYER
- 3. STORAGE
- 4. BATHROOM
- 5. LAUNDRY
- 6. KITCHEN
- 7. BATTERY STORAGE
- 8. LIBRARY
- 9. HALLWAY
- 10. GREENHOUSE
- 11. BEDROOM

HYPERCUBE II FLOOR PLAN

0 1 5 10 ft

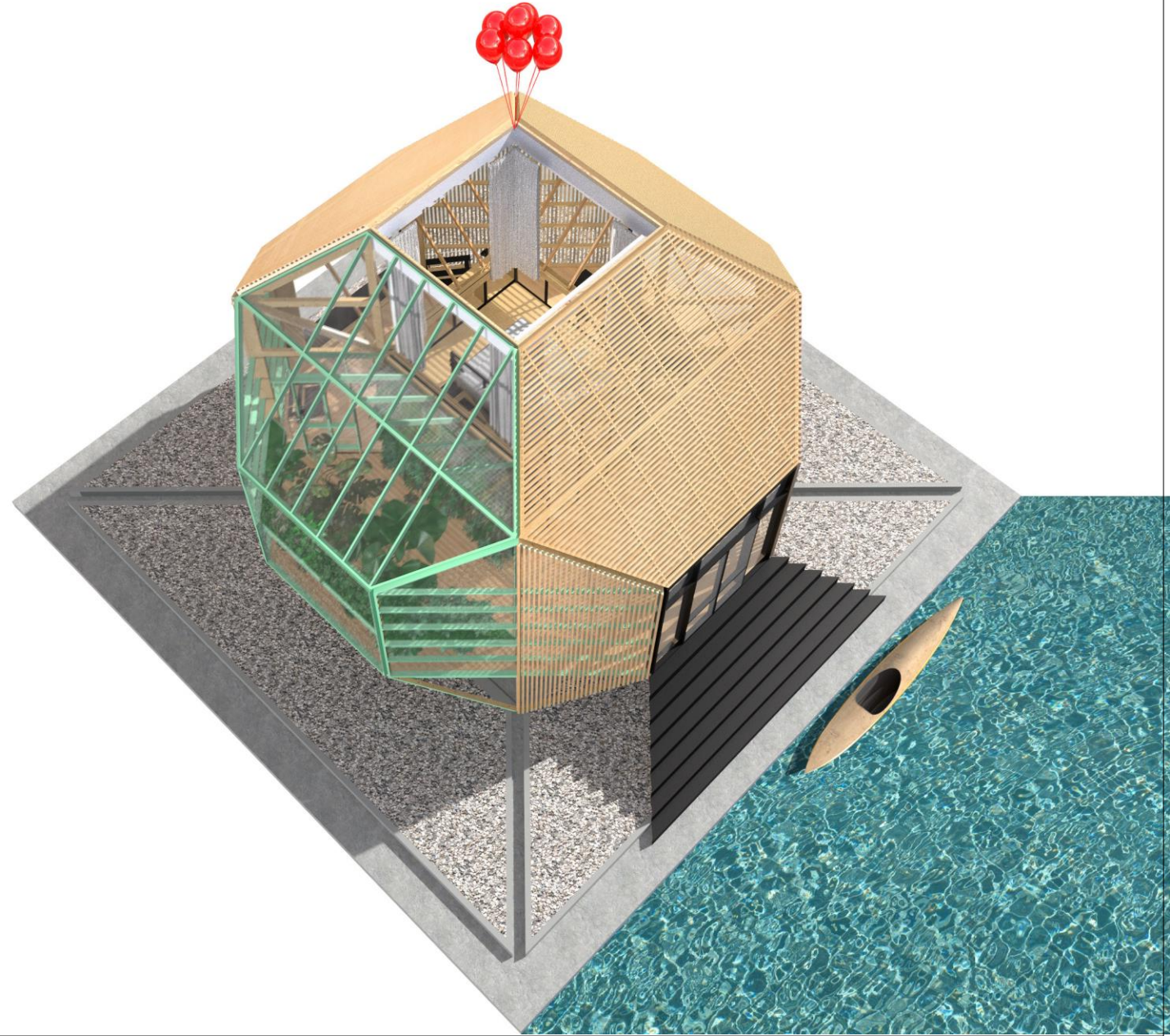
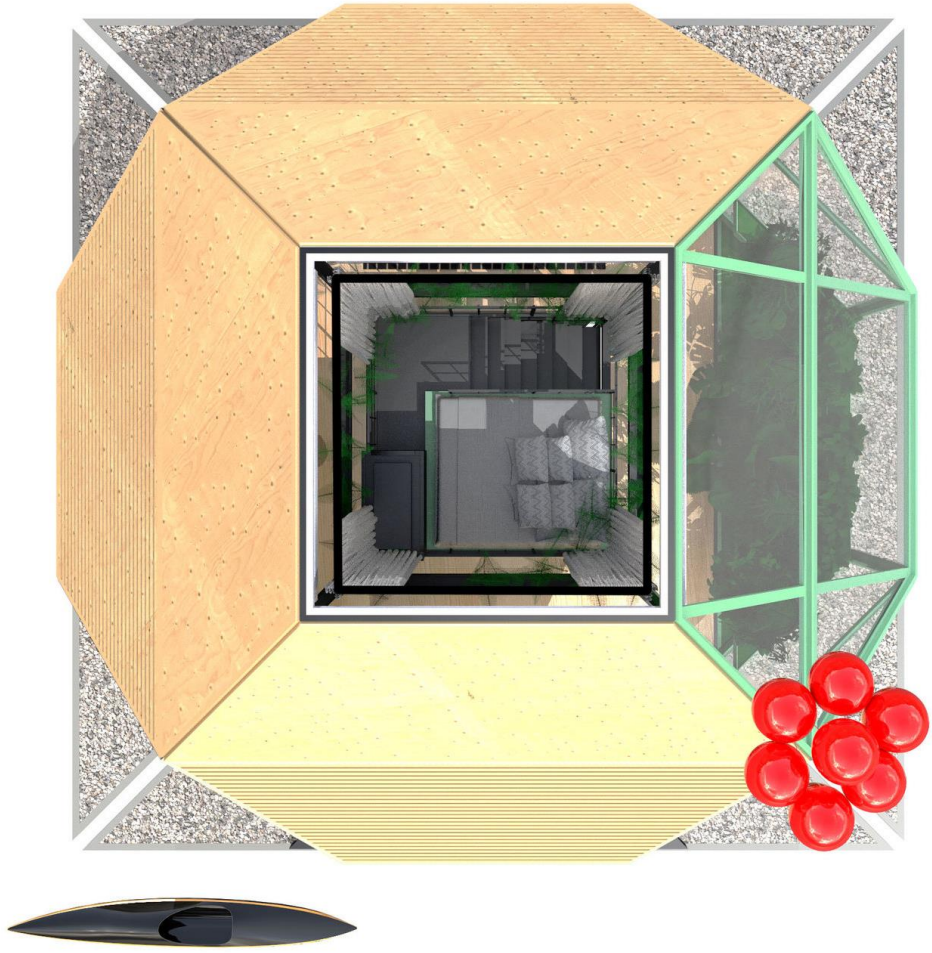


Partially constructed, partially grown, Hypercube is capable of producing and regulating its own energy, water and food supply.

FLOATING HOME

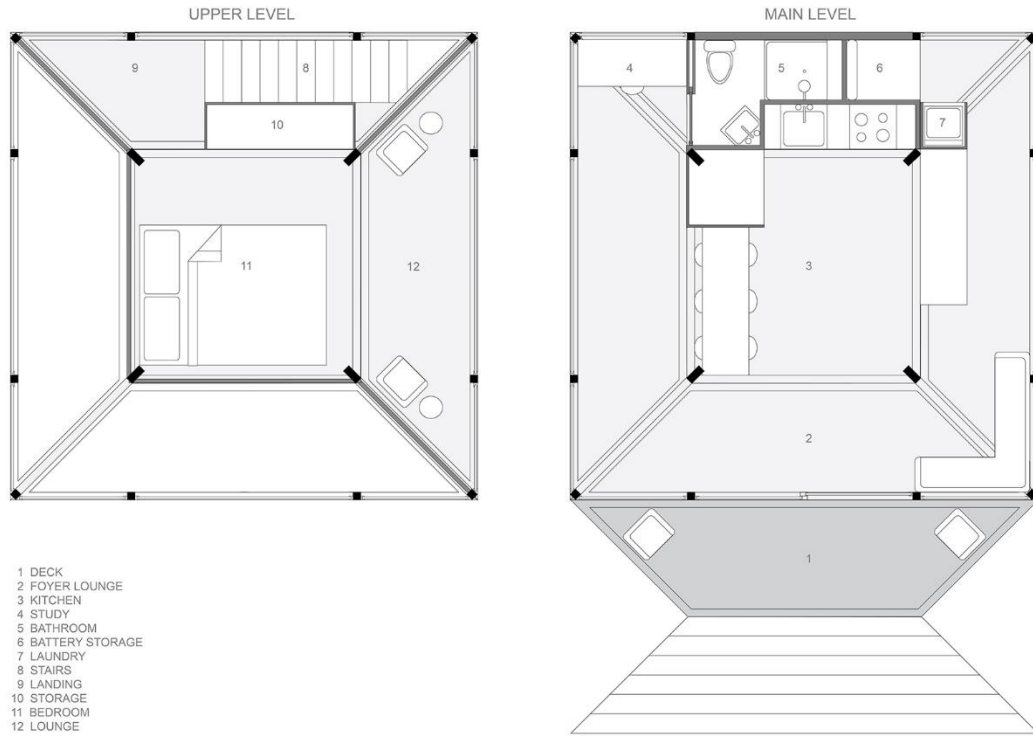


FLOATING HOME



HYPERCUBE

A pre-fab, off-grid dwelling design focused on pairing life down to the essentials.
Designed for flat-pack delivery and disassembly.



HYPERCUBE FLOOR PLAN

0 1 5 10 ft

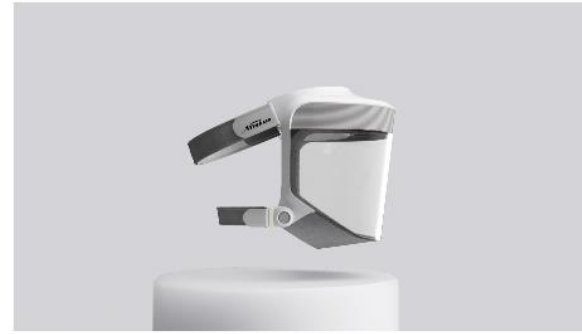
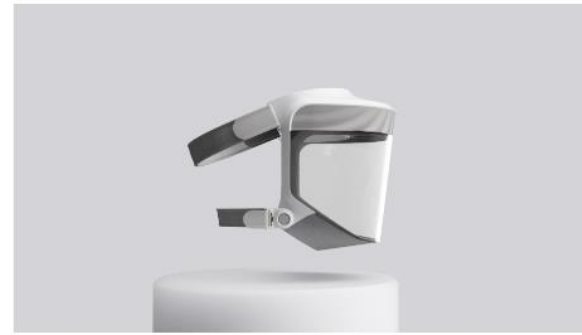


PRODUCTS + OBJECTS

- Nimbus Reprator
- Sirak Studio Vessel Collection
- Sirak Studio Chair Collection
- Ben Medansky Ceramics

NIMBUS

A respirator enabling safe reconnection during COVID lockdown



SIRAK STUDIO VESSEL COLLECTION

I worked with Sirak Studio to produce all 2D/3D design + drafting content for his LA-based fabricators. This included the design and build of the vessels, their assembly structure, and their casting molds.



SIRAK STUDIO CHAIR COLLECTION

I worked with Sirak Studio to produce all 2D/3D design + drafting content for his bespoke brass chair set.

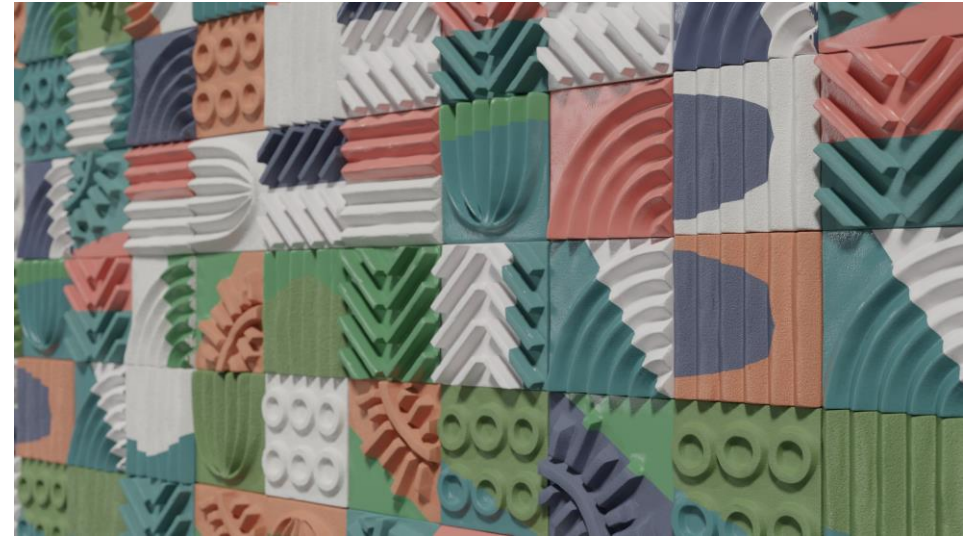


BEN MEDANSKY CERAMICS

I worked with [Ben Medansky](#) and Claudio Carbone to model and visualize tiles for an upcoming Kelly Wearstler-penned hotel, featuring his work.



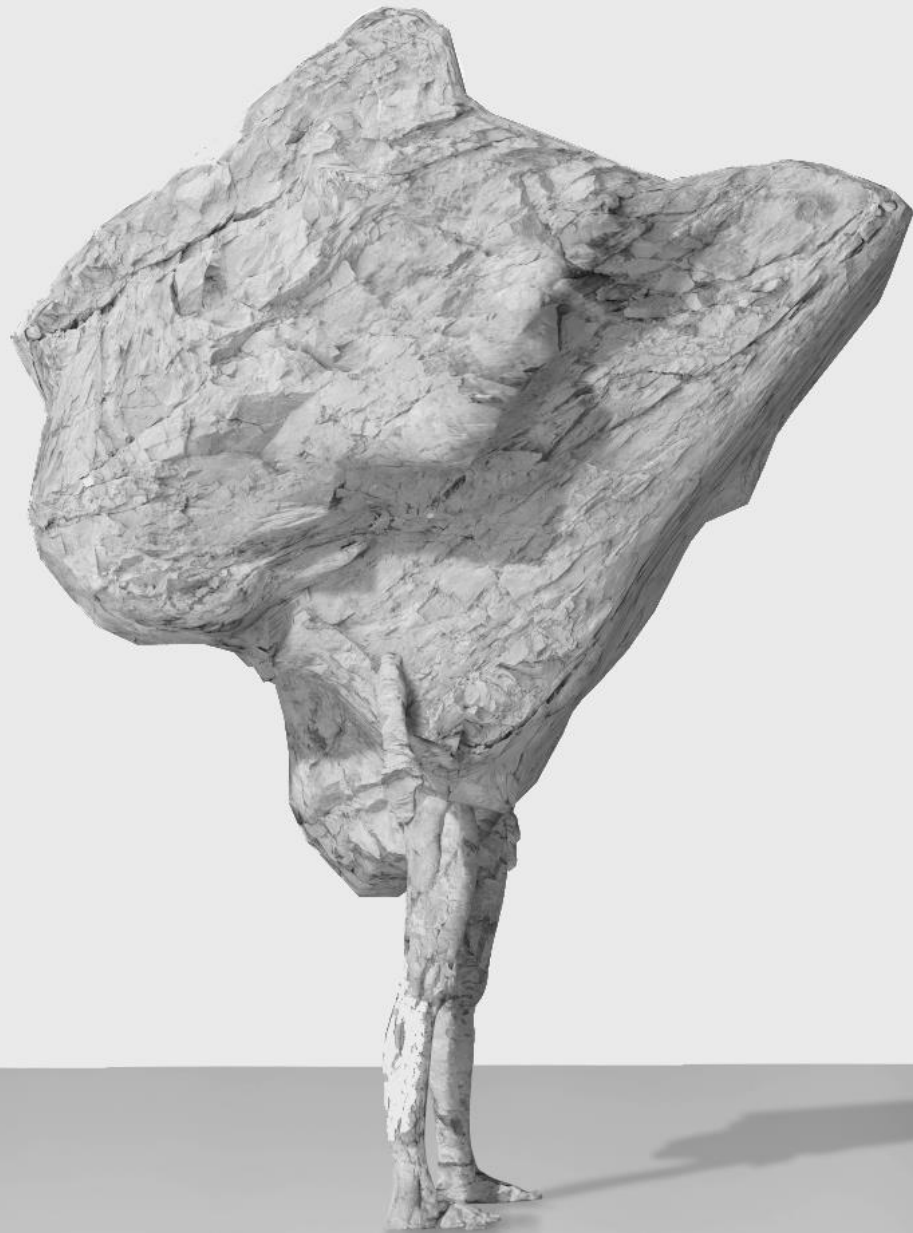
Photo



Renders

XR ACTIVATIONS

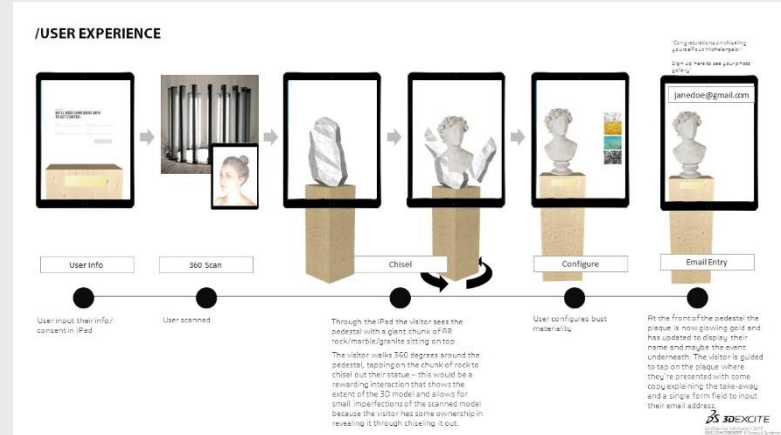
Mixed Reality Experiences



BUSTED

A collaboration between 3DEXCITE, DELL and LensCloud 3D, BUSTED is an interactive trade show activation designed to educate users about the digital prototyping process, distributed cloud rendering and 3D shareability. Upon entering the Photogrammetry 3D Scanner, visitors are scanned, their likeness rendered and output to an iPad in AR where they interact with a raw block of marble to 'carve' and customize their 3D Bust.

More on project [here](#)



THE LUXURY TECHNOLOGY SHOW

CONCEPT 2: AVATAR MASHUP

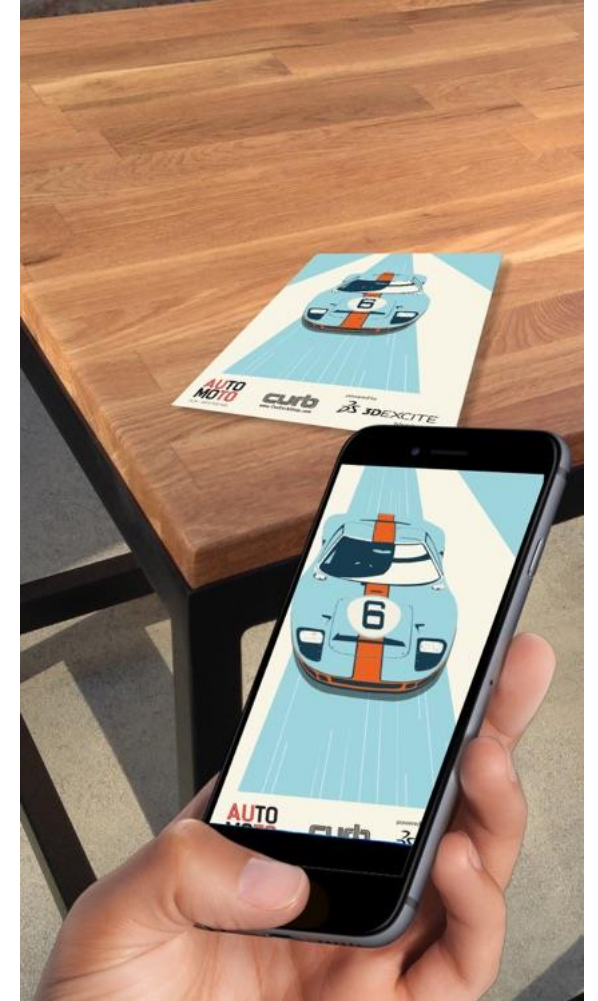
CONFIGURE AVATAR WITH MIX AND MATCH BODY PARTS AND ACCESSORIES



CURB AUTOMOTO APP

I served as Creative Lead for Automoto AR (Augmented Reality) Postcards, featuring original artwork provided by Curb, for the 2016 Automoto Film Festival. The cards are a unique mobile experience based on Dassault Systemes, 3DEXCITE Reality Generator application - a unique approach to marketing materials and communication, which artfully blends the physical and the virtual.

More on the app [here](#)



THANK YOU!